

**A COMPLETE  
TRANSFORMATION**

---

**FOUR ————— FIVE  
LOCHSIDE AVENUE**

---

Edinburgh Park

**FOUR ——— FIVE**  
**LOCHSIDE AVENUE**

# Nature at Work

42,996 sq ft of outstanding workspace situated in a green environment, where your team will love to work.

**FOUR — FIVE  
LOCHSIDE AVENUE**

Leading the charge in sustainable working at Edinburgh Park.

Four-Five Lochside Avenue is a ground breaking office redevelopment where the environment has been at the heart of every decision.





**SETTING  
THE NEW  
BENCHMARK  
FOR  
SUSTAINABILITY**



↑  
**A GARDEN  
HAVEN  
FOR YOUR  
STAFF ON  
'THE LAWN'**



↑  
**100%  
FRESH AIR,  
INSIDE THE  
BUILDING  
AND  
OUTSIDE**



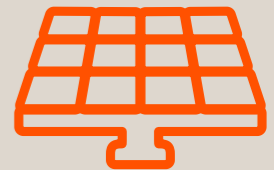
↑  
**ALL ELECTRIC  
INFRASTRUCTURE  
TO ASSIST ALL  
OCCUPIERS  
ACHIEVE THEIR  
ESG TARGETS**



↑  
**ALIGNING  
TO NET ZERO  
TARGETS**



↑  
**THE  
BUILDING'S  
ELECTRICAL  
SUPPLY IS  
FROM 100%  
RENEWABLE  
ENERGY  
SOURCES**



↑  
**PHOTOVOLTAIC  
PANELS  
GENERATING  
ZERO CARBON  
ELECTRICITY**



↑  
**TOUCHLESS  
ENTRANCE  
AND QUALITY  
SERVICE AT  
THE MANNED  
RECEPTION**



↑  
**DRYING  
AREA  
FOR THE  
GREAT  
OUTDOORS  
TENANTS**



↑  
**EPC RATING  
B+  
THE BEST  
EPC FOR A  
REDEVELOPMENT  
IN EDINBURGH  
PARK**



↑  
**11 DEDICATED  
ELECTRIC CAR  
CHARGING  
POINTS**



↑  
**SECURE CYCLE  
STORE  
FOR 60 CYCLES  
INCLUDING  
REPAIR STATION**



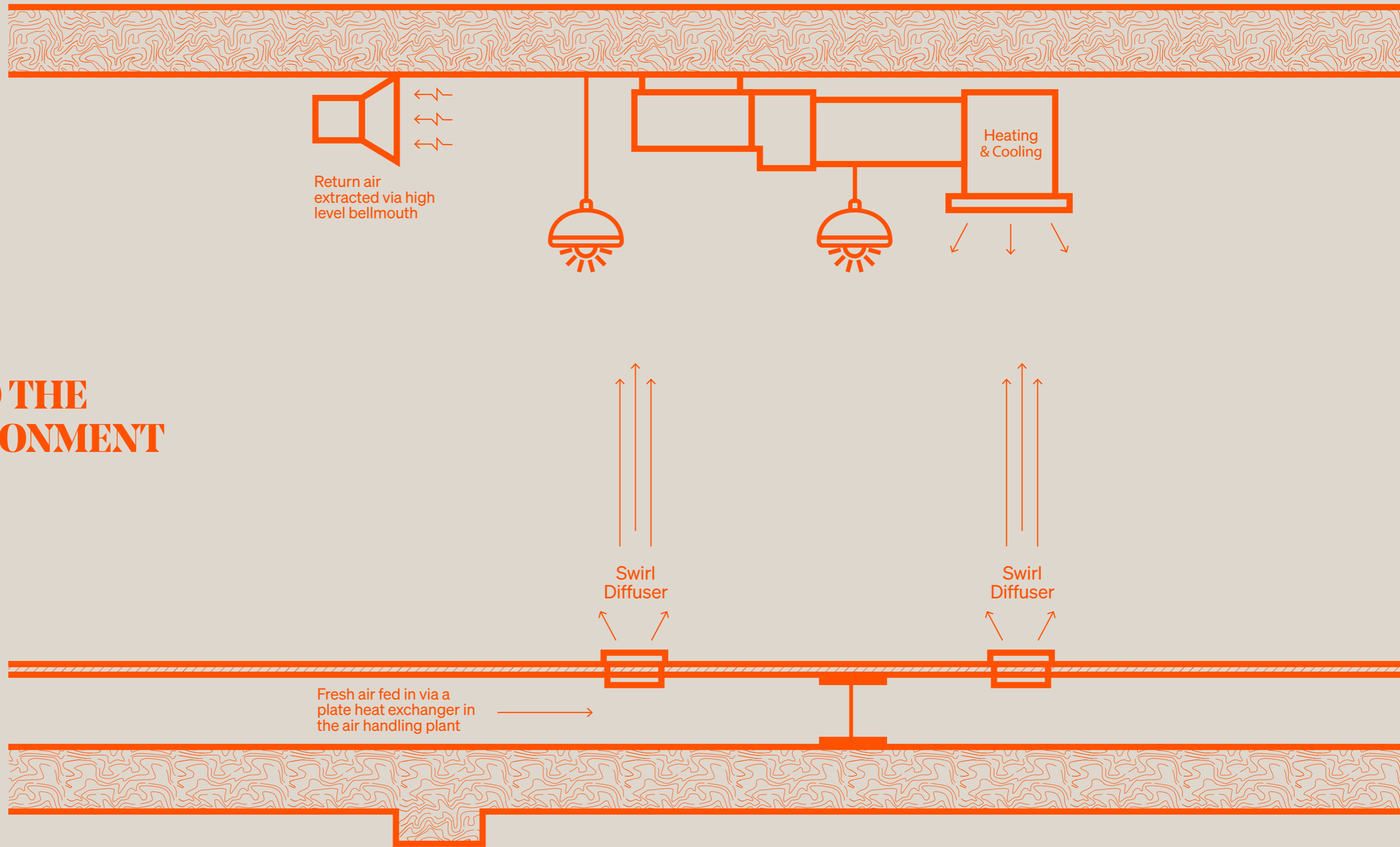
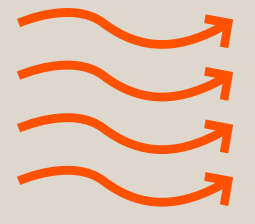
↑  
**SECURE  
LOCKERS  
LOCATED  
IN GROUND  
FLOOR  
CHANGING  
ROOMS**



↑  
**DEDICATED  
SHOWER  
FACILITIES  
MAKING THAT  
COMMUTE  
A LOT MORE  
ENJOYABLE**



↑  
**SECURE  
MALE,  
FEMALE AND  
ACCESSIBLE  
CHANGING  
FACILITIES**



**100% FRESH AIR  
DELIVERED INTO THE  
WORKING ENVIRONMENT**

Redeveloping

with Energy in Mind

FOUR — FIVE  
LOCHSIDE AVENUE

AMOUNT OF CARBON CREATED BY A TYPICAL NEW BUILD OFFICE

**1,000 KG CO<sub>2</sub>/M<sup>2</sup>**

AMOUNT OF CARBON SAVED BY THE REFURBISHMENT OF FOUR-FIVE  
LOCHSIDE AVENUE COMPARED AGAINST A NEW BUILD OF THE SAME SIZE

**3,200 TONNES**

(THAT'S THE EQUIVALENT ENERGY USE OF 385 HOMES FOR ONE YEAR)

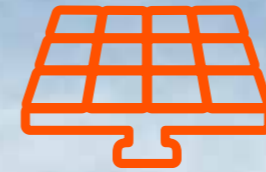
PV POTENTIAL TO GENERATE 14,580 KWH EQUIVALENT TO

**SAVING 7.6 TONNES  
OF CARBON\***



\*Based on current building regulation figures for Carbon Factor of displace electricity = 0.519 kg CO<sub>2</sub>/kWh

**DID WE MENTION 100% OF  
THE BUILDING'S ELECTRICAL  
SUPPLY IS FROM RENEWABLE  
ENERGY SOURCES?**



**PHOTOVOLTAIC PANELS GENERATING  
ZERO CARBON ELECTRICITY**



**A TOUCHLESS ENTRY THROUGH THE NEW CONTEMPORARY RECEPTION, ALL FINISHED AND FURNISHED TO THE HIGHEST STANDARDS.**

**EXPECT A WARM WELCOME ON ARRIVAL WITH OUR FRONT OF HOUSE TEAM ALWAYS ON HAND TO SUPPORT YOU AND YOUR VISITORS.**





FOUR — FIVE  
LOCHSIDE AVENUE



Further specification highlights:



**3 PIPE VRV / VRF HEAT RECOVERY ELECTRIC AIR CONDITIONING PROVIDING HEATING AND COOLING**



**MODERN DEFURB QUALITY SPACE PROVIDED WITH EXPOSED SERVICES SECURED TO THE SOFFIT OF THE CONCRETE SLAB**



**DEDICATED WELFARE BLOCK WITH LOCKERS, SHOWERS, DRYING AREA, CHANGING FACILITIES AND TOILET PROVISION ADJACENT TO THE CYCLE STORE WITH SECURE ACCESS BOTH INTERNALLY AND EXTERNALLY**



**SUPERIOR QUALITY FINISHES WITH BESPOKE RECEPTION, LARCH TIMBER LINED WALLS AND CEILING FEATURES THROUGHOUT AND QUALITY FINISHES TO TOILETS**



**FULL RAISED ACCESS FLOORING THROUGHOUT WITH 450MM ZONE**



**A SECURE SPACE CAN BE PROVIDED FOR AN EXTERNAL TENANT INSTALLED GENERATOR**



**A WORKPLACE DENSITY DESIGN OF 1 PERSON PER 8 SQ M**



**ARCHIVE STORAGE SPACE IS AVAILABLE BY SEPARATE NEGOTIATION IN THE PLANT ROOM SPACE**



**234 DEDICATED CAR PARKING SPACES OVERALL MEANING A RATIO OF 1 SPACE PER 182 SQ FT**



**HIGH PERFORMANCE FULLY GLAZED AUTOMATIC NON-CONTACT SENSOR OPERATED REVOLVING DOOR TO MAIN ENTRANCE**



**BT, VODAFONE AND VIRGIN MEDIA DUCTS AND FIBRE LOCATED ADJACENT TO THE PROPERTY WITH SPARE DUCTS INSTALLED TO NORTH AND CENTRAL RISER**



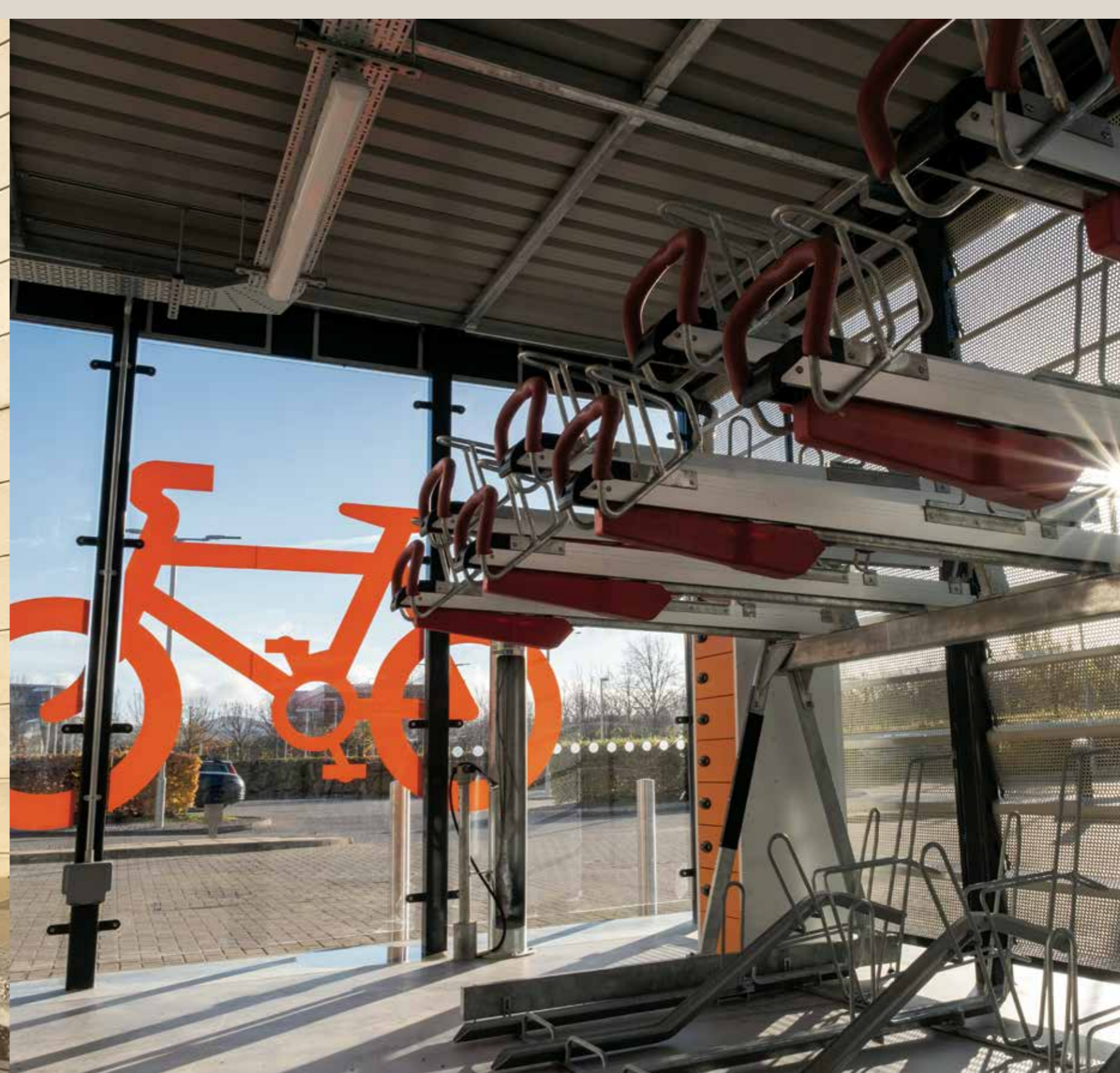
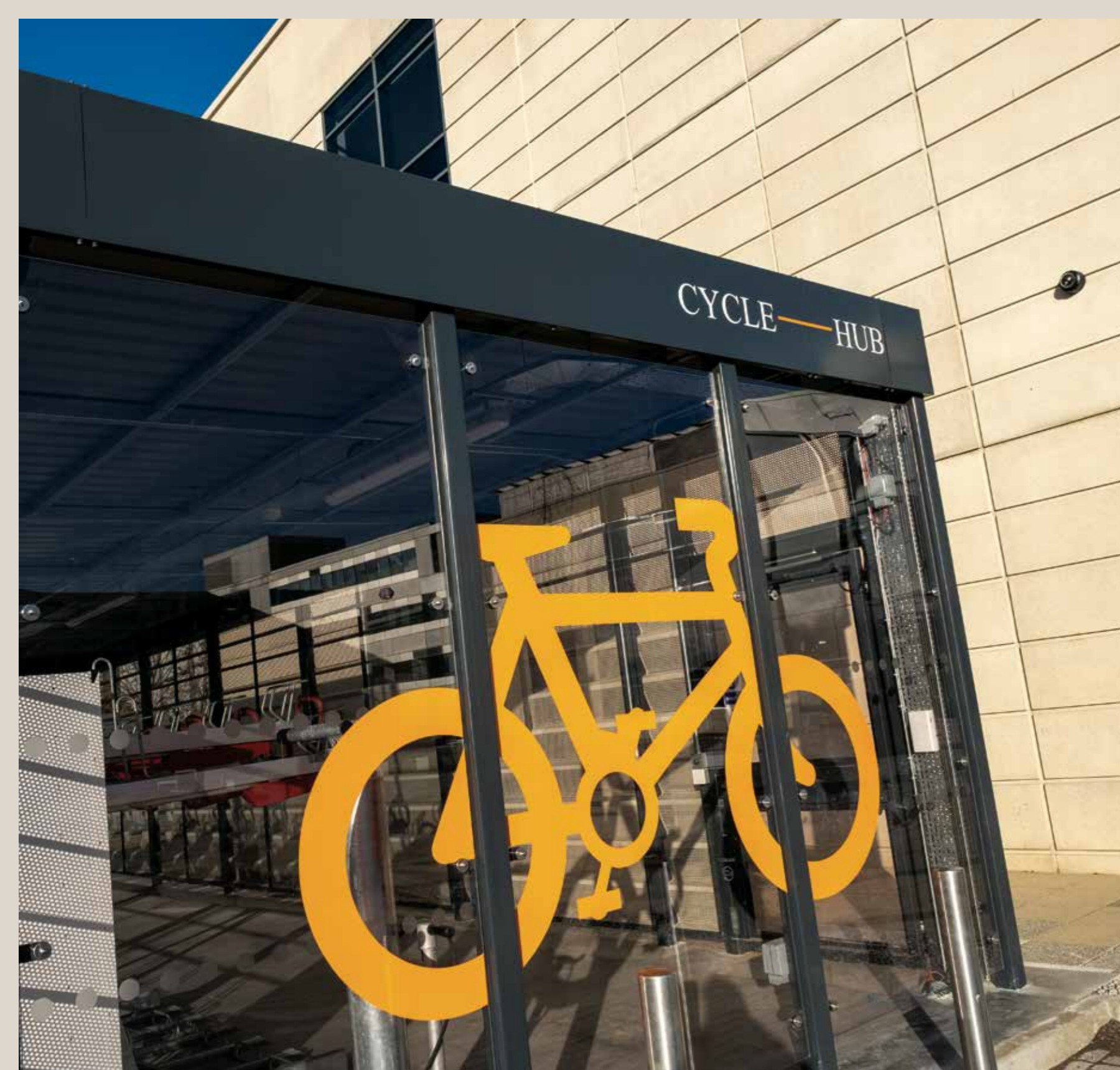
**DEDICATED RISER SPACE SET ASIDE FOR TENANT'S FIT-OUT WORKS**



**3\* EWAVE RATING FOR TELECOMMUNICATIONS**

**SPACIOUS,  
CONTEMPORARY  
MEETING ROOMS  
HAVE BEEN ADDED  
AS PART OF THE  
BUILDING'S  
REFURBISHMENT,  
WITH OVERSIZED  
PORTAL WINDOWS.**





Park

It

**THE BUILDING BOASTS 234 DEDICATED CAR PARKING SPACES  
OVERALL MEANING A RATIO OF 1 SPACE PER 182 SQ FT, 11  
DEDICATED ELECTRIC CAR CHARGING POINTS AND A SECURE  
CYCLE STORE FOR 60 CYCLES AND REPAIR STATION.**

**FOUR — FIVE  
LOCHSIDE AVENUE**

Let there

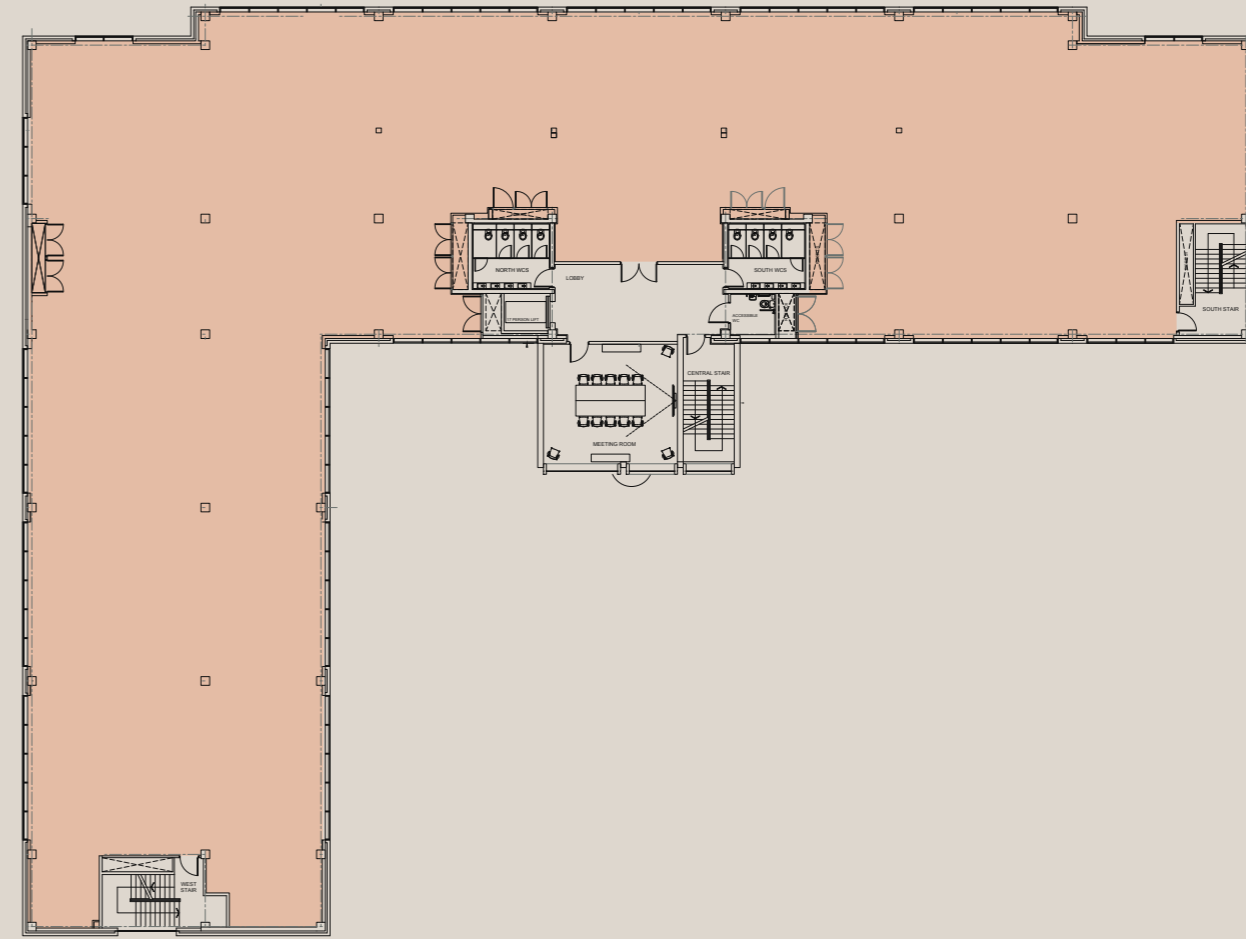
be Light

Highly flexible, light flooded floor plates allow for multiple configurations to suit individual working requirements while at the same time delivering inspiring, panoramic views of the surrounding area.

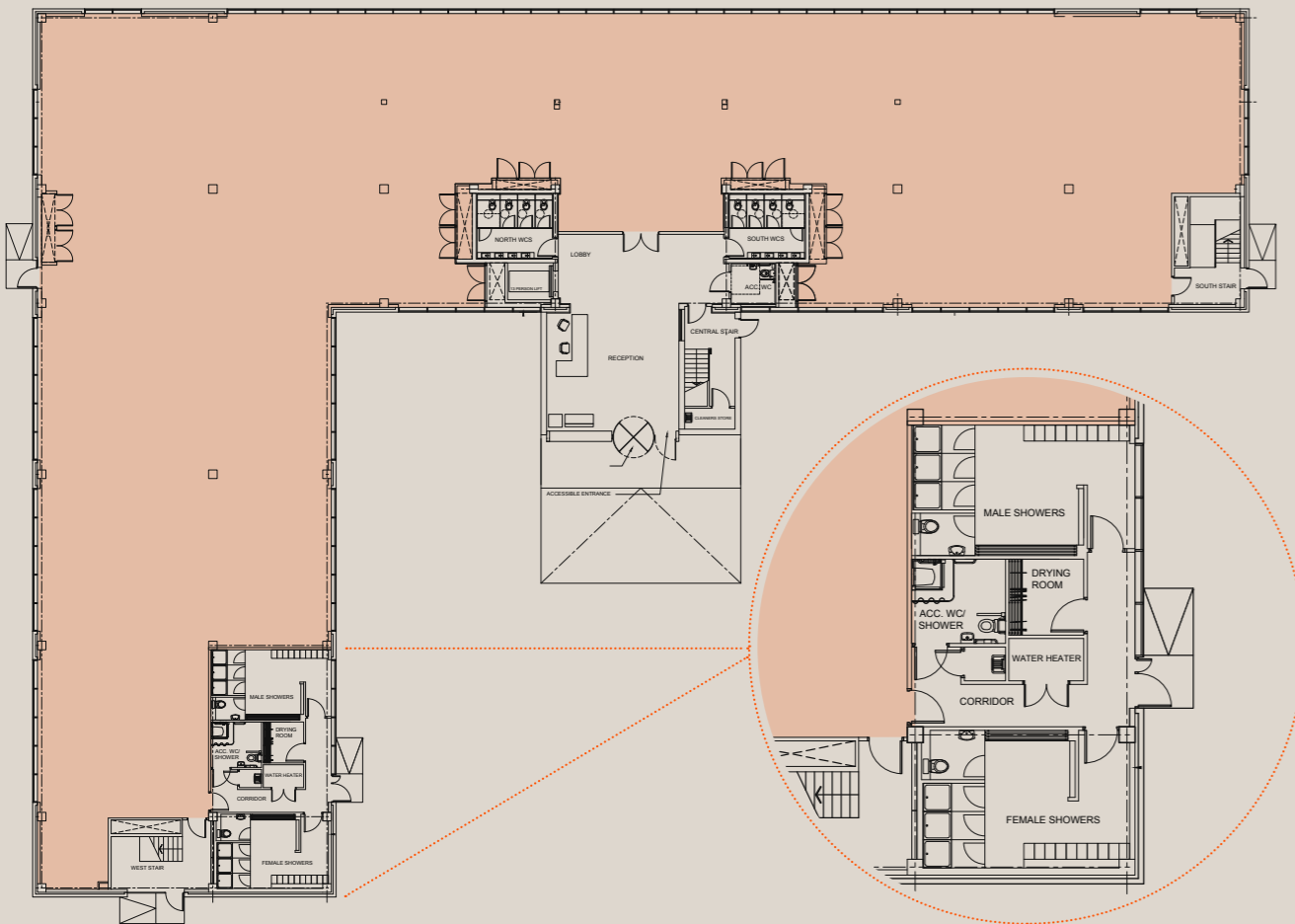
FOUR — FIVE  
LOCHSIDE AVENUE



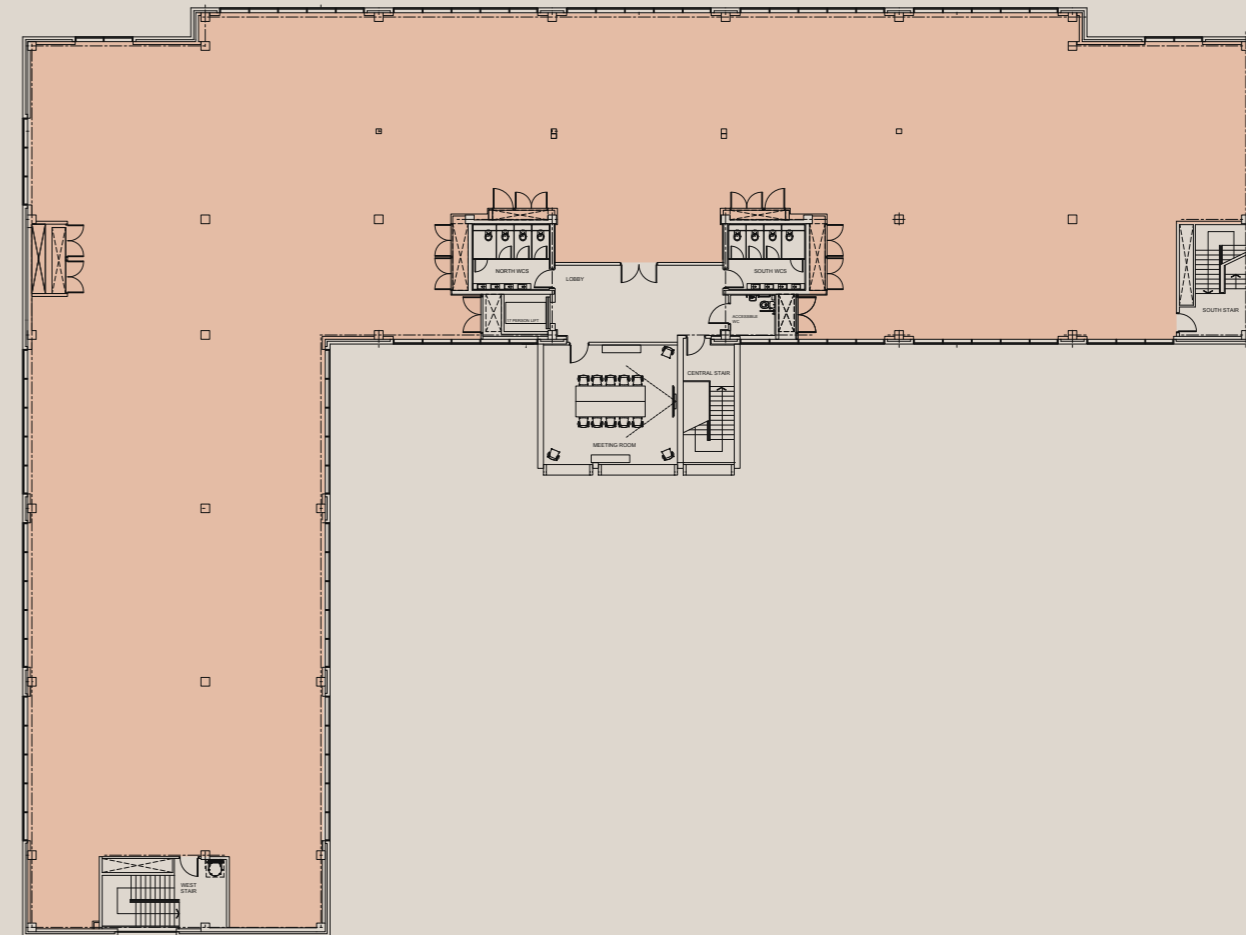
| Floor        | Sq ft         | Sq m         |
|--------------|---------------|--------------|
| Second       | 14,849        | 1,379        |
| First        | 14,868        | 1,381        |
| Ground       | 12,814        | 1,190        |
| Reception    | 465           | 43           |
| <b>Total</b> | <b>42,996</b> | <b>3,993</b> |



**First Floor**  
14,868 sq ft / 1,381 sq m



**Ground Floor**  
12,814 sq ft / 1,190 sq m

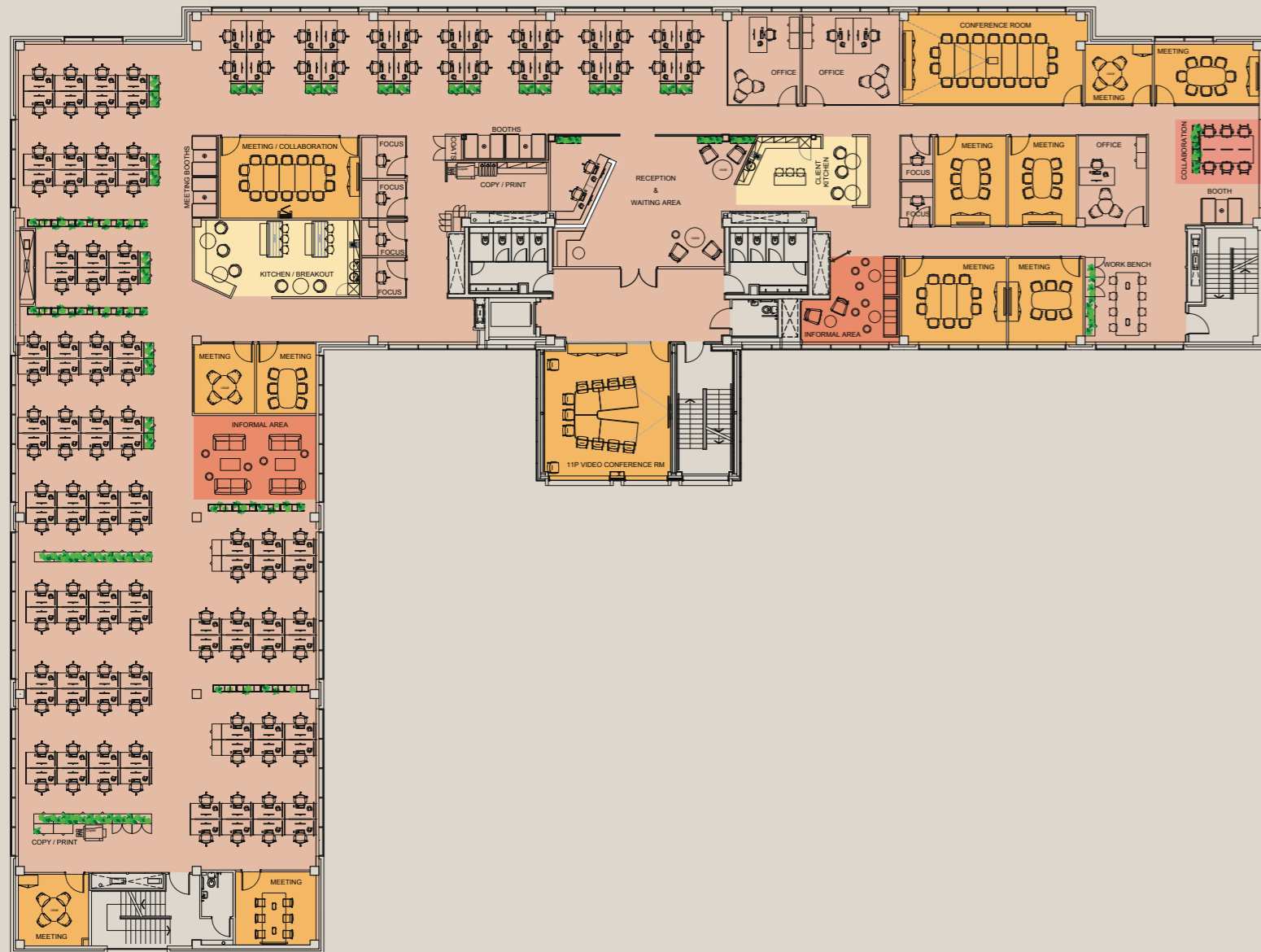


**Second Floor**  
14,849 sq ft / 1,379 sq m

## High Density Space Plan

High density layout:  
Occupancy area - 1,358 sq m / 14,617 sq ft  
= 10.8 sq m / 116.0 sq ft per person

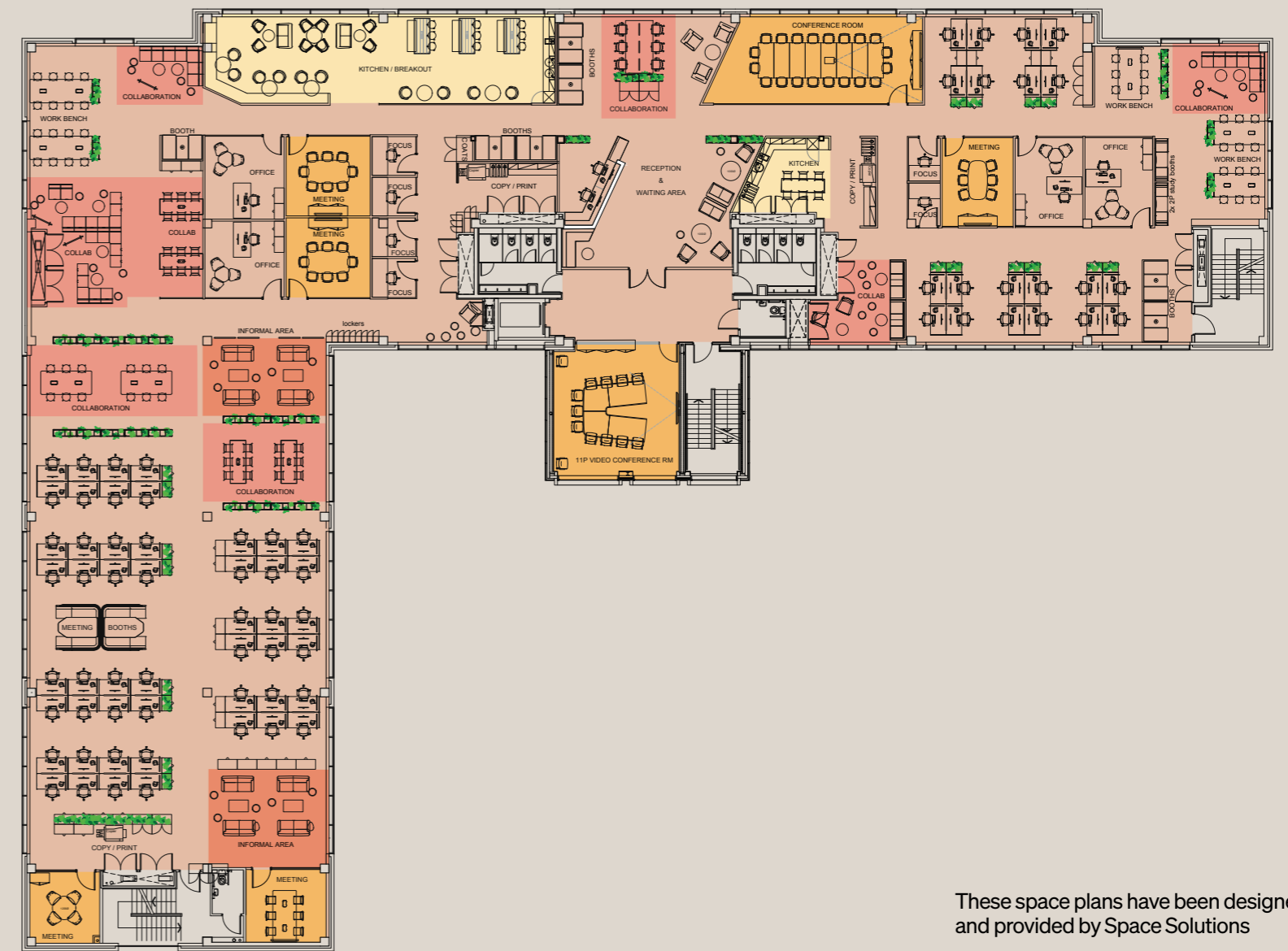
|                       |     |                                 |
|-----------------------|-----|---------------------------------|
| Proposed floor layout | 3 x | 4 person meeting room           |
| 126 x Open plan       | 5 x | 6 person meeting room           |
| 2 x Single office     | 1 x | 8 person meeting room           |
| 1 x Double office     | 1 x | 11 person video conference room |
|                       | 1 x | 16 person meeting room          |
|                       |     | (with foldable partition)       |
|                       | 1 x | 14 person meeting room          |
|                       | 1 x | 18 person conference room       |
|                       | 6 x | Focus room                      |
|                       | 2 x | Informal meeting area           |
|                       | 2 x | Workbench / collaboration area  |
|                       | 5 x | 4 person meeting booth          |
|                       | 1 x | Reception & waiting area        |
|                       | 2 x | Copy / print                    |
|                       | 1 x | Staff kitchen / breakout        |
|                       | 1 x | Client kitchen / breakout       |



## Low Density Space Plan

Low density layout:  
Occupancy area - 1,358 sq m / 14,617 sq ft  
= 19.4 sq m / 209.6 sq ft per person

|                       |      |  |
|-----------------------|------|--|
| Proposed floor layout | 1 x  | 4 person meeting room                        |
| 70 x Open plan        | 2 x  | 6 person meeting room                        |
| 4 x Single office     | 2 x  | 8 person meeting room                        |
|                       | 1 x  | 11 person video conference room              |
|                       | 1 x  | 18 person conference room                    |
|                       | 6 x  | Focus room                                   |
|                       | 2 x  | Informal meeting area                        |
|                       | 10 x | Workbench / bench seating collaboration area |
|                       | 4 x  | Soft seating collaboration area              |
|                       | 9 x  | 4 person meeting booth                       |
|                       | 2 x  | 2 person study booth                         |
|                       | 1 x  | Reception & waiting area                     |
|                       | 3 x  | Copy / print                                 |
|                       | 2 x  | Kitchen / breakout                           |



These space plans have been designed and provided by Space Solutions

**FOUR ——— FIVE  
LOCHSIDE AVENUE**



# TAKE A BREATH



Take in the fresh air in the lush, green environment that is Edinburgh Park.



# RUN FOR IT



An environment that allows staff wellness and welfare to be central to every decision.

# CAPITAL COOL

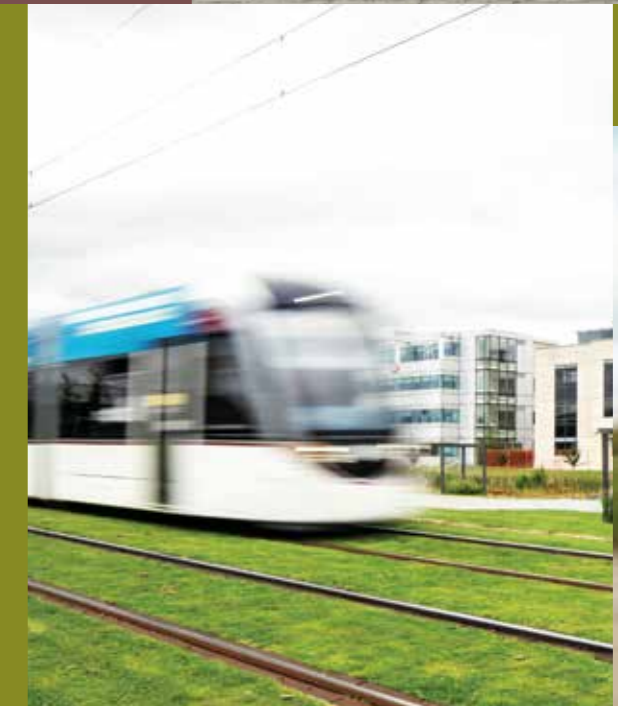
Voted one of the top 20 cities worldwide for wellbeing in 2020, Edinburgh boasts world class festivals, a global food scene and a strong educational heritage with 42% of graduates choosing to remain in the city.



# HOP ON

Drive, cycle, bus, tram, run?

You choose how you get to Edinburgh Park.



# MEET & EAT

Edinburgh Park offers a wide variety of amenity giving you a wealth of lunchtime eating options.



The attractiveness of Edinburgh Park as a place to work will shortly be further enhanced by Parabola's new mixed use community, the first phase of which is currently under construction. Located just minutes walk from Four - Five Lochside Avenue, the development will feature new office buildings, 1,800 diverse and affordable homes, an art trail and new civic square lined with restaurants, bars and shops. Other attractions include a lido swimming pool, gym and a 150 seat venue that will host events and exhibitions. The aim is to create a 24/7 active, healthy and vibrant location where people can live, work and have fun.

Creating a sustainable community



Image provided courtesy of Parabola



 **NEW OFFICE BUILDINGS**

 **1,800 DIVERSE AND AFFORDABLE HOMES**

 **ART TRAIL**

 **NEW CIVIC SQUARE LINED WITH RESTAURANTS, BARS AND SHOPS**

 **LIDO SWIMMING POOL**

 **GYM**

 **150 SEAT VENUE THAT WILL HOST EVENTS AND EXHIBITIONS**

**FOUR — FIVE  
LOCHSIDE AVENUE**





Scotland's capital city with a population of 524,930. Home to the Scottish Parliament and the heart of the Scottish legal system



Over 50% of working age residents educated to degree level or above



The city has a strong educational heritage boasting 6 universities and 3 colleges



Home to the National Museum of Scotland, the Scottish National Gallery, the Scottish National Portrait Gallery and the Scottish National Gallery of Modern Art



The city attracts more overseas visitors per year than any other UK city outside London



The UK's second largest and Europe's fourth largest financial centre



In March 2020 Edinburgh was voted one of the top 20 cities worldwide for wellbeing based on factors such as happiness, healthcare and access to green spaces

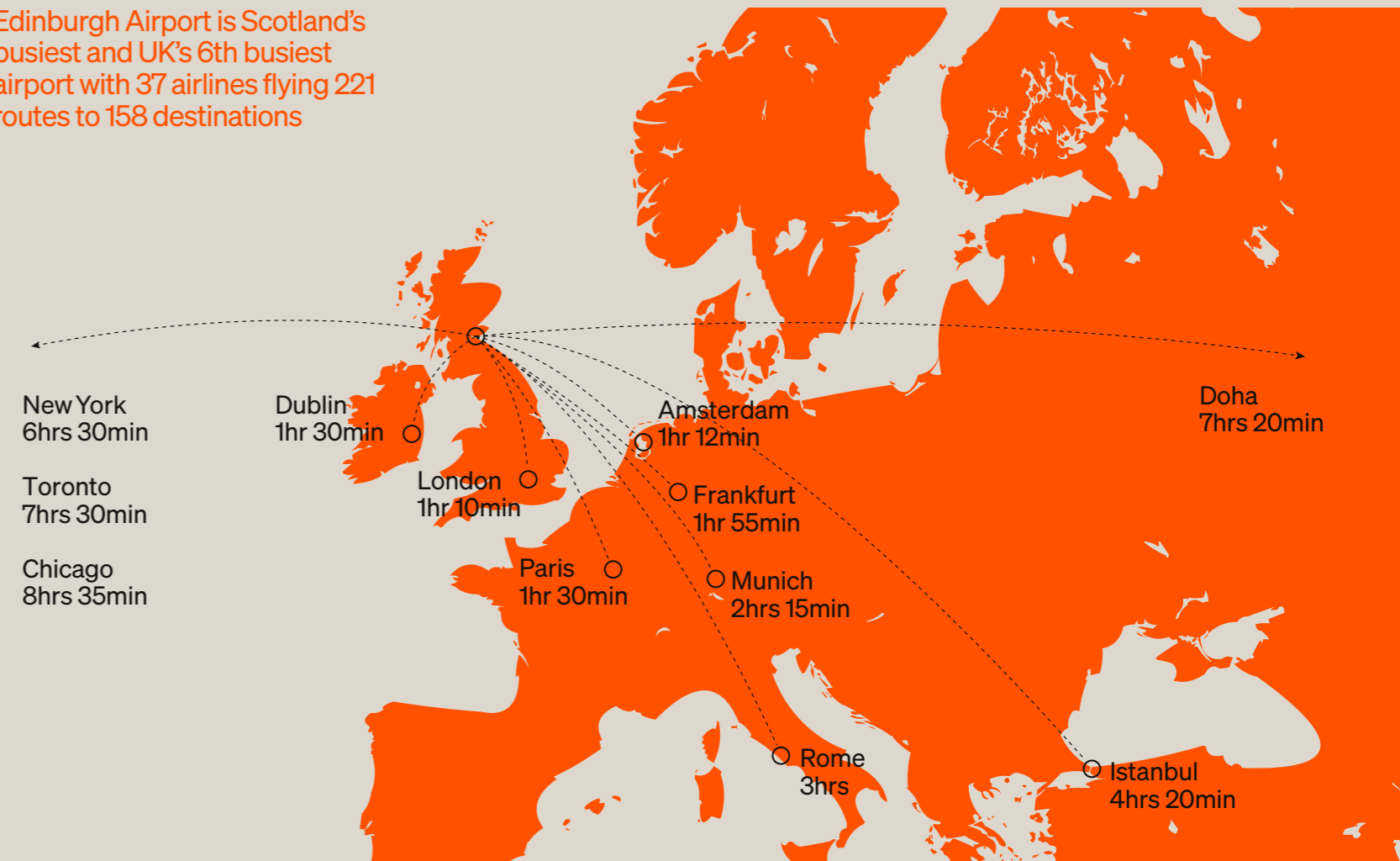


Edinburgh boasts more green space than any other UK city



Home to the world famous Edinburgh International Festival and the Edinburgh Festival Fringe along with a myriad of additional festivals

Edinburgh Airport is Scotland's busiest and UK's 6th busiest airport with 37 airlines flying 221 routes to 158 destinations



**WHETHER YOU NEED TO HOT FOOT IT TO CATCH A TRAM, TRAIN OR BUS OR ARE ADOPTING A HEALTHY COMMUTE ON FOOT OR BY BIKE THEN YOU HAVE EVERYTHING YOU NEED AT YOUR SERVICE.**

Edinburgh Park benefits from its own dedicated tram stop, Edinburgh Park Central, linking the city centre and nearby Edinburgh Airport. Additionally two train stations and multiple bus routes also service the Park. National Cycle Routes 8, 75 and 754 run close by and for those commuting by car, Edinburgh Park offers immediate access to the City Bypass (A720), which in turn connects with the M8, M9 and M90.



**OCCUPIERS**

- 01 Business Stream, WSP
- 02 JP Morgan
- 03 BT
- 04 M&G Prudential
- 05 Aegon
- 06 Aegon Asset Management
- 07 John Menzies
- 08 Sainsbury's Bank
- 09 Diageo
- 10, 12 HSBC
- 11 Marsh and McLennan Companies
- 13, 14 Lloyds Banking Group
- 15 Pure Offices
- 16 Tesco Bank
- 17 Heineken UK Limited



**AMENITY**

- 01 David Lloyd Club
- 02 Gyle Shopping Centre  
Bank of Scotland, Boots, Clarks, Costa, EE, The Gyle Barbers, Holland & Barrett, JD, M&S, Morrisons, River Island, Subway, Starbucks, Superdrug, The Body Shop, WH Smith.
- 03 ibis Hotel
- 04 Busy Bee Nursery
- 05 Energize Fitness and Health Club
- 06 Premier Inn
- 07 Hermiston Gait Retail Park  
TK Maxx, Halfords, Carpetright, Decathlon, Tesco, B&Q Warehouse, Wren Kitchens, Krispy Kreme, KFC, Home Bargains.
- 08 Novotel



**DRIVE TIMES**

|                       |            |
|-----------------------|------------|
| Forth Road Bridge     | 17 minutes |
| Livingston            | 19 minutes |
| Edinburgh City Centre | 25 minutes |
| Dunfermline           | 25 minutes |
| Falkirk               | 29 minutes |
| Glasgow               | 50 minutes |



- Rail Line
- Rail Station
- Tram Line
- Tram Stop
- National Cycle Route

# Detailed

# Specification

# FOUR — FIVE LOCHSIDE AVENUE

## DESIGN STANDARDS

The alteration and refurbishment of the building is designed to comply with the requirements of the Building (Scotland) Regulations 2004-as amended in October 2019 and is informed by the British Council for Offices (BCO) Guide to Specification 2019.

## ENERGY PERFORMANCE

The property has achieved an EPC rating of B+.

## BUILDING EXTERNAL FABRIC INSULATION

The new extension has been designed to the following U value standards in compliance with the current Technical Standards:

- External walls 0.21 W/sq m K
- Glazing and doors 1.4 W/s qm K
- Ground floor 0.2 W/s qm K
- Roof 0.15 w/s qm K

## SUPERSTRUCTURE

The building comprises an 'L Shaped' 3 storey reinforced concrete structure. The ground floor slab is a combination of a 150 mm thick ground bearing slab on 200 mm of hardcore and a precast suspended slab 250 mm thick including structural topping.

The superstructure comprises of reinforced concrete frames at 6.0 and 9.0 m centres supporting a combination of 150 mm/250 mm thick precast suspended slabs at first and second floors and 200 mm/300 mm thick precast suspended slabs at third floor.

The plant room is situated on the roof of the 3rd floor.

The new extended floor slabs are composite concrete 'holorib' slabs on steel frame.

## IMPOSED FLOOR LOADINGS

The office floor slabs are designed to accommodate the following uniform imposed load:

|                        |            |
|------------------------|------------|
| Live load              | 4kN/sq m   |
| Partitions             | 1kN/sq m   |
| Ceilings and services  | 0.5kN/sq m |
| Raised floor           | 0.5kN/sq m |
| Plant room (enclosed)  | 7.5kN/sq m |
| Plant room (open)      | 5.0kN/sq m |
| Other areas for access | 1.5kN/sq m |

## SPACE HEATING & COOLING

High efficiency heat recovery VRV/VRF system in the offices.

The system provides heating and cooling in the open plan office areas with plant having +20% spare capacity in order to suit the fit out.

VRV/VRF is also provided in reception, lift lobbies, and meeting rooms.

External Design Temperatures:-  
Winter: - 5 °C db 100% RH (fabric), - 8 °C db 100% RH (air systems)  
Summer: 24 °C db, 20°C wb

Internal Design Temperatures:-  
Office Areas/Reception/ 20 °C db 32 °C db Winter  
Lobbies/Meeting Rooms 23 °C db 32 °C db Summer

## VENTILATION

Two packaged air handling units within the internal plant room for fresh air provision. 100% fresh air introduced to the building via ductwork within the sealed pressurised floor void.

Mechanical extract from toilets & shower/changing facilities - make-up air via natural air transfer from adjacent areas.

Fresh air provision provides 1.6 l/s/sq m (12 l/s/p based on 1/8sq m) with plant having an additional 10% spare capacity.

## AUTOMATIC CONTROLS / BMS

BMS system provides control and/or monitoring of:

- Air handling units
- Toilet extract fans
- Cold water booster pumps and break tank
- Domestic hot water plant
- Water sub-meters

VRF systems provided with central intelligent master controllers on each office floor with local user controllers installed in each zone.

VRF systems interfaces with BMS to provide common fault signals.

## POWER INSTALLATIONS

External substation provides the main LV supply to an MCCB switchboard located in an adjacent external enclosure.

The MCCB switchboards serve the building and car park.

The distribution strategy allows for dual tenancy occupation within each floor. Split way lighting and power tenant distribution boards, comprising lighting and small power final circuits have been provided in each electrical services riser on all floors. All tenant DBs are metered to enable independent monitoring of the general lighting and small power usage.

All electrical meters are connected to the BMS system to enable central data collection and billing.

A minimum of 25% spare ways have been provided in all tenant final circuit distribution boards to suit future tenant fit outs. Allowance of 25W/sq m in DBs / infrastructure to suit future tenant fit outs.

Final circuit distribution boards complete with metering have been provided for the landlord services.

## GENERAL & EMERGENCY LIGHTING

Suspended linear LED fittings are provided throughout the office in compliance with LG7 standards. Prospective tenants will be able to adjust the locations of the light fittings to suit their fit-out design (partitions, etc.) and to provide additional lighting as required to suit their office layout.

A fully networked lighting control system has been provided throughout the building comprising of presence/daylight sensors throughout the office to allow for daylight dimming and for dimming fittings where there is no occupancy detected. The lighting control system is sufficiently flexible to enable adjustments as required during the operation of the building and to allow the future integration of cellular offices.

An emergency lighting installation has been provided throughout in compliance with BS 5266-1 for a three-hour non-maintained system.

## LIFT INSTALLATION

1Nr 15-person passenger lift provided.

## PROTECTIVE INSTALLATIONS

Door access system is provided to the main reception entrance, the entrance to the male and female showers, the bike shed, the meeting rooms and the 3rd floor plant room. Handset receiver provided at the reception, which links to the car park entrance gate and main entrance side door, cabling provided within each office floor for the potential installation of handset receivers.

CCTV cameras provided to cover the external areas of the building, the main reception, the bike shed. CCTV equipment is power over ethernet (PoE), with the equipment and recording device located within a comms rack on the third-floor plant room. CCTV viewing is via display screen at the reception desk.

An intruder detection system is installed, with door contacts to the ground floor doors and PIR detectors.

## LOW CARBON & SUSTAINABLE DESIGN

The following low carbon and sustainable technologies are provided:

- High Efficiency Heat Recovery VRF Heat Pump Systems
- AHU-Plate Heat Exchanger
- LED lighting
- PV for electricity generation
- 11 dedicated electric vehicle charging points
- Electric supply – 100 % renewables source

## RECEPTION

Walls - Paint finish generally, with a slatted timber veneer feature panelling behind the reception desk and a smaller section of slatted panelling on the opposite wall.

Floor - Tiled barrier mat entrance. Slip resistant vinyl sheet floor finish generally.

Speed gates installed at reception, 1 x disabled gate, 2 x standard gate.

Ceiling - Grey paint finish to exposed metal composite decking with exposed services and feature suspended halo lighting.

Reception desk - Two-person desk with timber finish generally and Corian or similar finish to elevated central section.

## LIFT LOBBIES

Walls - Paint finish generally.

Floor - Slip resistant vinyl sheet to ground floor, and carpet tiles to upper floors.

Ceiling - Grey paint finish to exposed metal composite decking suspended timber slatted raft and integrated linear lighting.

Doors - Toilet doors have horizontal grain oak veneer finish.

Lift doors have black colour coated metal finish.

Suite entrance doors have solid timber veneer finish.

Suite doors have electro-mechanical locking with card reader on lobby side.

## CORE TOILETS

Walls - Full height ceramic tile finish generally, with areas of mirror.

Floor - Ceramic floor tile.

Ceiling/soffits - Painted finished plasterboard with recessed linear light over vanity unit and recessed spotlights elsewhere.

Cubicles - Laminate faced cubicle system and matching IPS panelling.

Sanitaryware - Floor mounted back to wall WCs with brushed stainless-steel manual dual flush buttons set into IPS.

Doc M sanitaryware and grab rails in accessible toilet.

Solid acrylic trough WHB unit with sensor operated brushed stainless-steel taps and soap dispensers.

Fixtures and Fittings - Mirror over WHB unit, spur point for future installation of electric hand drier.

## SHOWER / CHANGING AREA

Walls - Painted plasterboard generally, except where noted. Full height ceramic tile finish within shower cubicles. Full height ceramic tile finish within accessible toilet/shower.

Floor - Raised access sub-floor generally, with screed on built up insulation within shower cubicles and accessible toilet/shower.

Slip resistant vinyl sheet floor generally.

Slip resistant vinyl sheet floor finish to drying room.

Slip resistant ceramic floor tile within shower cubicles and accessible toilet/shower with flush shower trays.

Ceiling/soffits - Paint finish plasterboard with recessed spotlights.

Cubicles Wall - Construction sides with solid grade laminate fronts and doors. Matching IPS panelling within WC cubicles.

Sanitaryware - Floor mounted back to wall WCs with brushed stainless-steel manual dual flush buttons set into IPS.

Matching WHBs with tiled splashbacks and wall mounted mirrors.

Doc M sanitaryware and grab rails in accessible toilet.

Recessed thermostatic shower valves with wall mounted rain heads in general shower cubicles and DDA compliant shower.

Head, rail and seat in accessible shower.

Fixtures and Fittings  
Laminate finish vanity shelf and wall mounted mirror in each changing room.  
20 Z style lockers in each changing area with metal bodies and solid grade laminate doors.  
Shower rail and curtain in accessible shower.  
Wall mounted soap dispensers.

## TENANT FLOOR SPACE

Walls - Existing wall linings plaster skimmed and white paint finish applied generally.

Where required, existing timber/MDF skirtings have been renewed, and all skirtings re-finished.

Columns - All existing concrete columns have been painted black.  
All new steel columns painted in 1-hour intumescent paint and boxed in non-fire rated plasterboard.

New exposed steel beams painted black to match ceiling in 1-hour FR intumescent paint.

Floor - New raised access flooring. Air distribution grilles replaced throughout the floors.

Ceiling - Grey paint finish to exposed soffits including existing precast concrete slabs and new metal composite decking. Exposed services and suspended linear light fittings.

Riser Doors - New doors are paint finish timber with butt hinges and eurocylinder locking.

## BIKE STORE

Cycle storage - A new enclosed, secure cycle store for 60 cycles has been installed at the front of the building. The new cycle store incorporates lighting and card operated door security.

## TELECOMMUNICATIONS

BT, Vodafone and Virgin media ducts and fibre located adjacent to the property. Spare ducts installed to north and central risers.

Secured 3 star eWave telecommunications rating. Full report available upon request.

## SERVICING AND WASTE

A 23 sq m waste storage enclosure is located near the building.



Superior quality finishes throughout



Sensor operated brushed stainless-steel taps and soap dispensers



20 Z style lockers in each changing area



Speed gates installed at reception, 1x disabled gate, 2x standard gate



Suspended linear LED fittings



11 dedicated electric car charging points



Recessed thermostatic shower valves with wall mounted rain heads



Touchless entrance and quality service at the manned reception

FOUR — FIVE  
LOCHSIDE AVENUE



Cameron Stott

T: +44 (0)131 301 6715  
M: +44 (0)7785 907 096  
cameron.stott@eu.jll.com

—

Hannah Done

T: +44 (0)131 243 2209  
M: +44 (0)7927 566 327  
hannah.done@eu.jll.com

Angela Lowe

T: +44 (0)131 243 4189  
M: +44 (0)7793 808 458  
angela.lowe@cbre.com

—

Beverley Mortimer

T: +44 (0)31 243 4179  
M: +44 (0)7771 370 504  
beverley.mortimer@cbre.com



**FOUR — FIVE  
LOCHSIDE AVENUE**

**four-five.co.uk**

JLL / CBRE for themselves and for the vendors or lessors of this property whose agents they are, give notice that:- a. the particulars are set out as a general outline only for guidance and do not constitute, nor constitute part of, an offer or contract; b. all descriptions, dimensions, references to condition and necessary permissions for use and occupation, and other details are believed to be correct, but any intending purchasers, tenants or third parties should not rely on them as statements or representations of fact but satisfy themselves that they are correct by inspection or otherwise; c. no person in the employment of JLL / CBRE has any authority to make or give any representation or warranty whatever in relation to the property; d. Any images may be computer generated. Any photographs show only certain parts of the property as they appeared at the time they were taken. e. This correspondence is expressly subject to completion of formal legal missives in accordance with Scots Law. © May 2022.

A development by



KNIGHT PROPERTY GROUP

**four-five.co.uk**