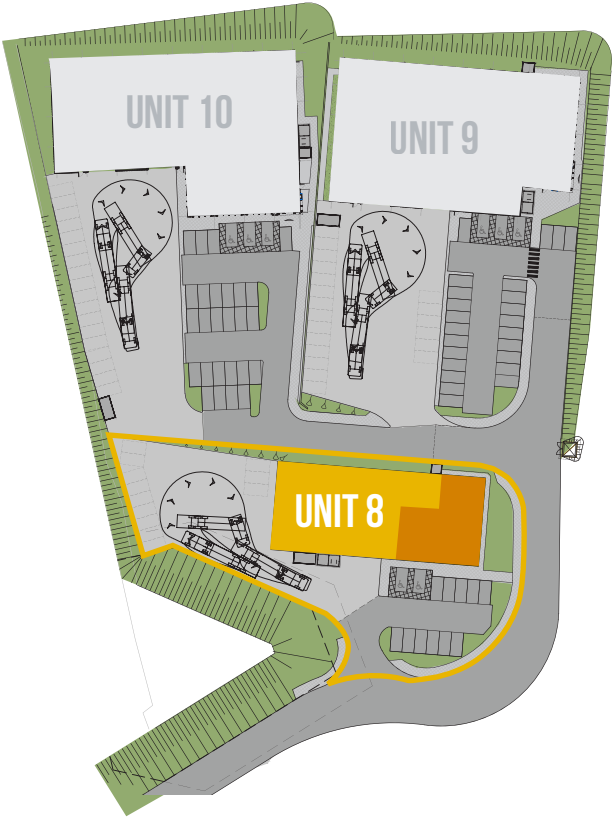


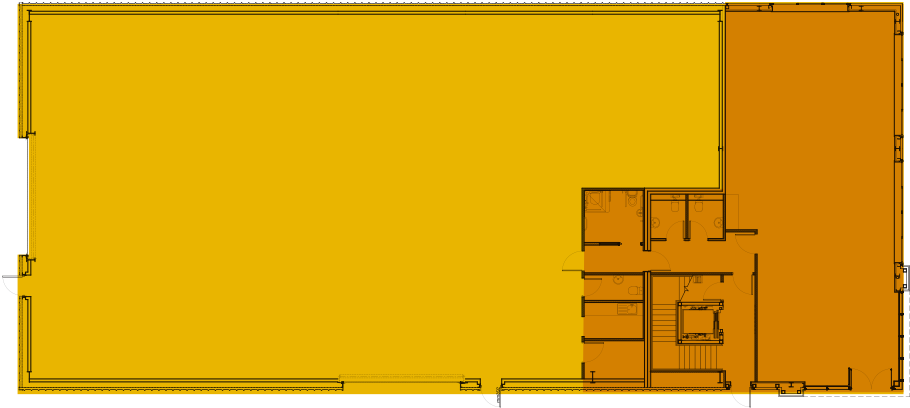
AVAILABLE **UNITS**

Schedule of areas:

| UNIT 8 | AREAS | | |
|-----------|----------------|--------------------|-------------|
| | Offices: | 279 m ² | 3,000 sq.ft |
| | Warehouse: | 557 m ² | 6,000 sq.ft |
| | Concrete Yard: | 890 m ² | 9,580 sq.ft |
| | Parking: | 22 Spaces | |



FIRST FLOOR:

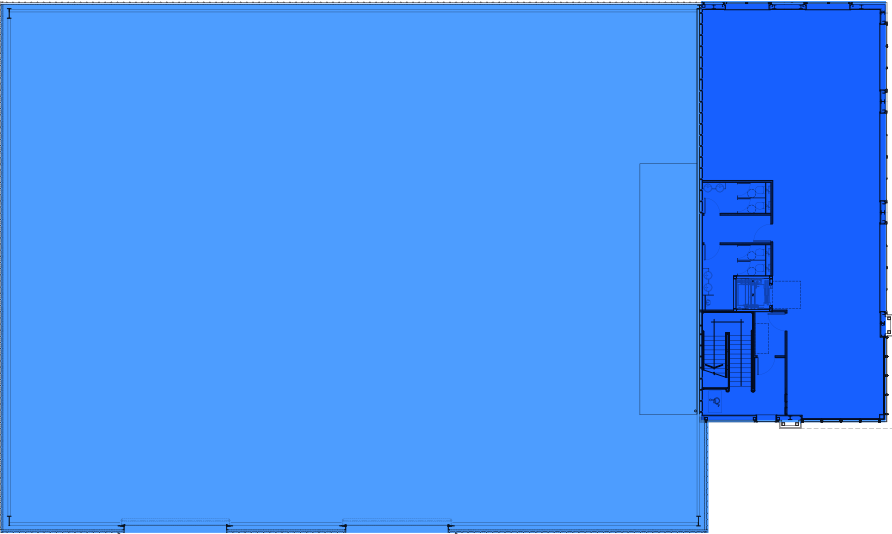
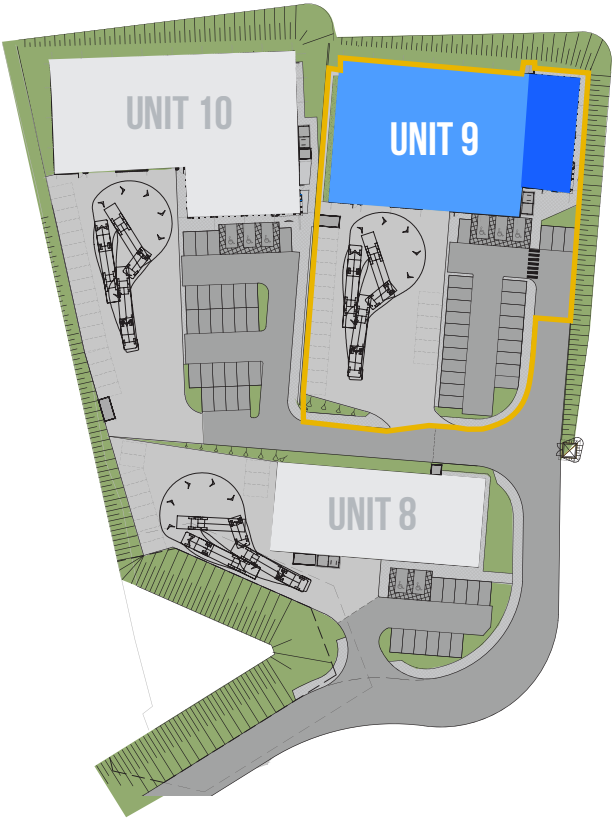


GROUND FLOOR:

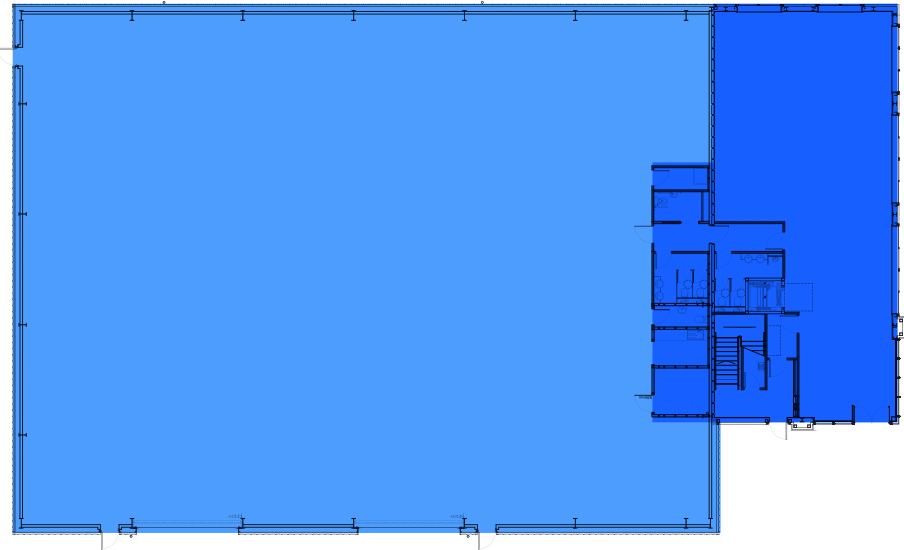
AVAILABLE **UNITS**

Schedule of areas:

| UNIT 9 | AREAS | | |
|-----------|----------------|----------------------|--------------|
| | Offices: | 418 m ² | 4,500 sq.ft |
| | Warehouse: | 1,027 m ² | 11,060 sq.ft |
| | Concrete Yard: | 1,100 m ² | 11,840 sq.ft |
| | Parking: | 47 spaces | |



FIRST FLOOR:

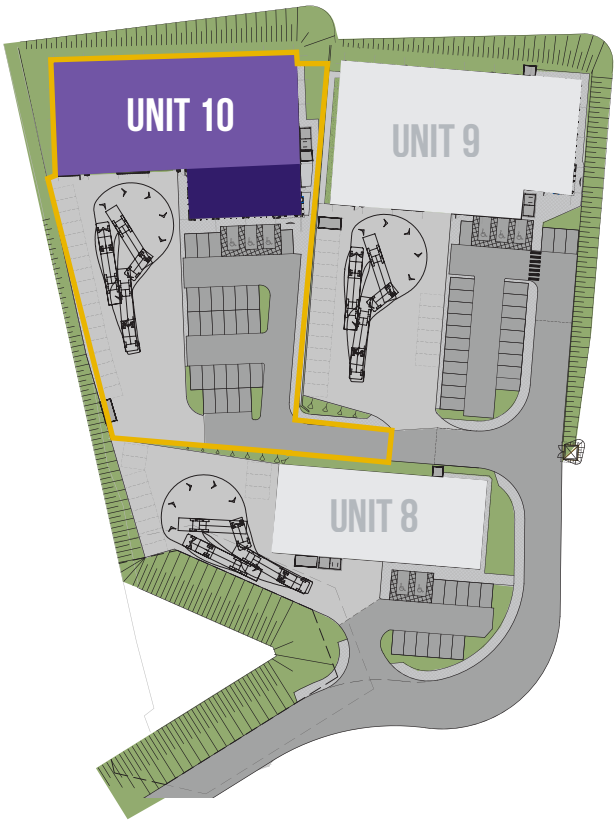


GROUND FLOOR:

AVAILABLE **UNITS**

Schedule of areas:

| UNIT 10 | AREAS | | |
|------------|----------------|----------------------|--------------|
| | Offices: | 418 m ² | 4,500 sq.ft |
| | Warehouse: | 1,027 m ² | 11,060 sq.ft |
| | Concrete Yard: | 1,150 m ² | 11,840 sq.ft |
| | Parking: | 47 Spaces | |



FIRST FLOOR:



GROUND FLOOR: