

2 MODERN RETAIL UNITS IN THE WEST END OF ABERDEEN

13 CHAPEL STREET - 593 SQ.FT.

15 CHAPEL STREET - 430 SQ.FT.

LOCATION

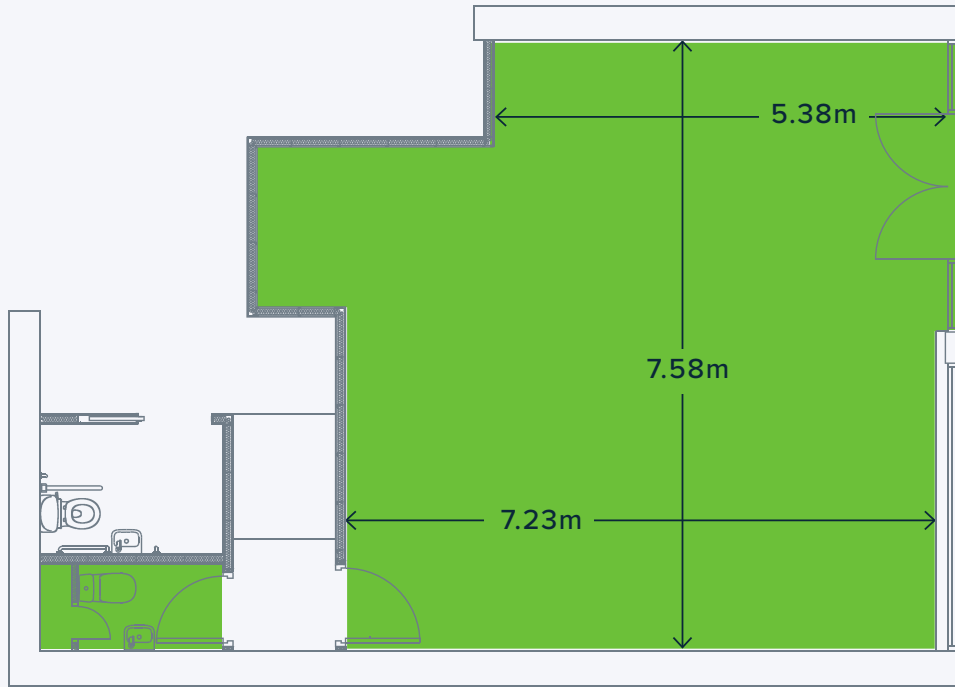
The units are located on Chapel Street within the popular West End, retail, restaurant and office area of Aberdeen City Centre.

The subjects are in close proximity to the Grade A offices, The Capitol and The Silver Fin where occupiers include Price Waterhouse Coopers, Dentons, Chrysaor, Verus Petroleum, Barclays and Grant Thornton. Other neighbouring occupiers include BlueSky Business Space, Tiger Lily Clothing, Pure Man, Foodstory, Bellino Shoes, Hamish Munro and Grape & Grain. Located close to Aberdeen's main commercial thoroughfare Union Street where nearby occupiers include Pizza Express, Greggs, Sainsbury's Local, Café Nero and Starbucks. Chapel Street multi storey car park is located in close proximity providing 500 car parking spaces as is a Holiday Inn Express.

IMMEDIATE ENTRY AVAILABLE TO EACH RETAIL UNIT

INDICATIVE LAYOUT PLAN

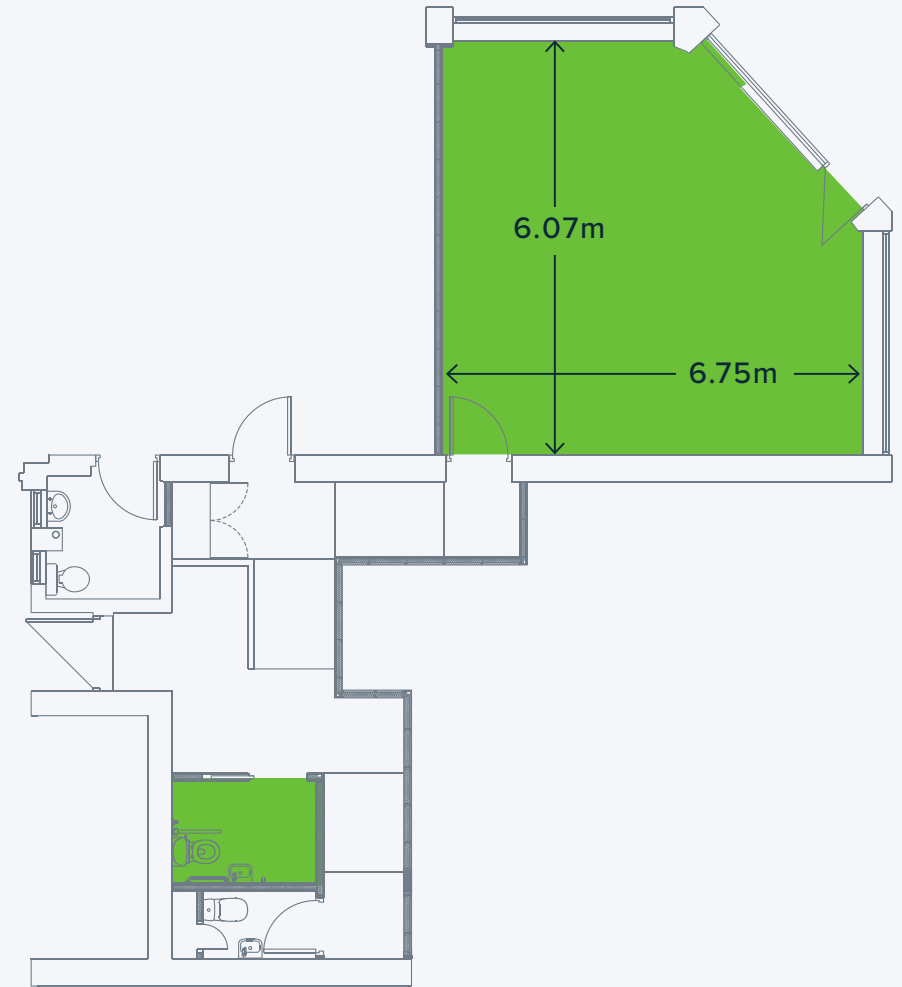




N°13 Chapel Street

Total Size: 55m² (593 sq.ft) NIA

Floor plan: 7.23m (d) x 7.58m (w)



N°15 Chapel Street

Total Size: 40m² (430 sq.ft) NIA

Floor plan: 6.75m (d) x 6.07m (w)

SURROUNDING
OCCUPIERS

THE
CAPITOL
DEFINING QUALITY

ALMONDINE
HANDMADE MACARONS

G & G

SILVER FIN

foodstory
share. simple. good. food.

TLB

pure

Sirene