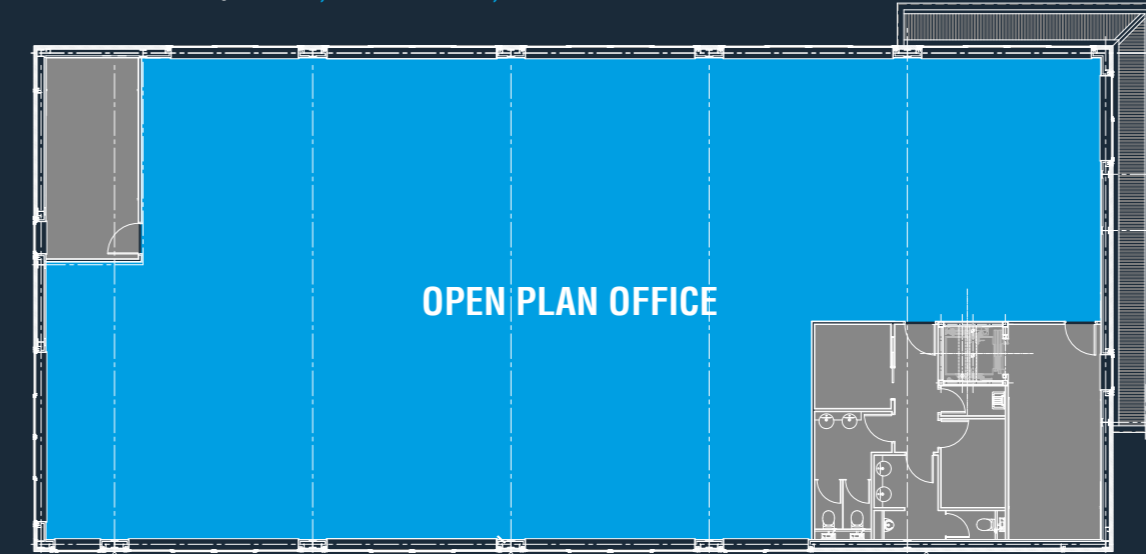
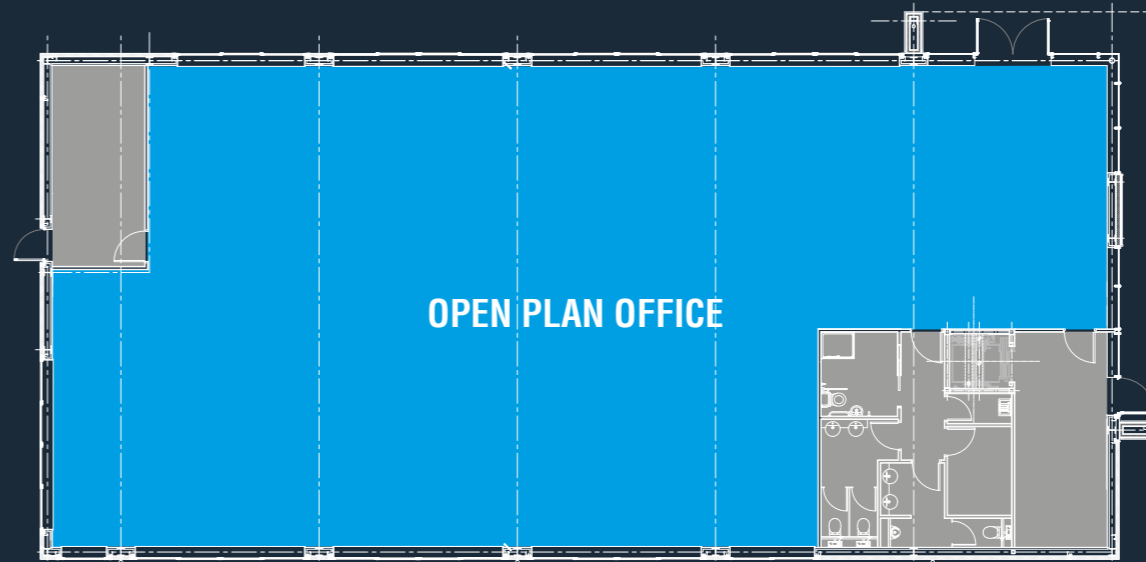




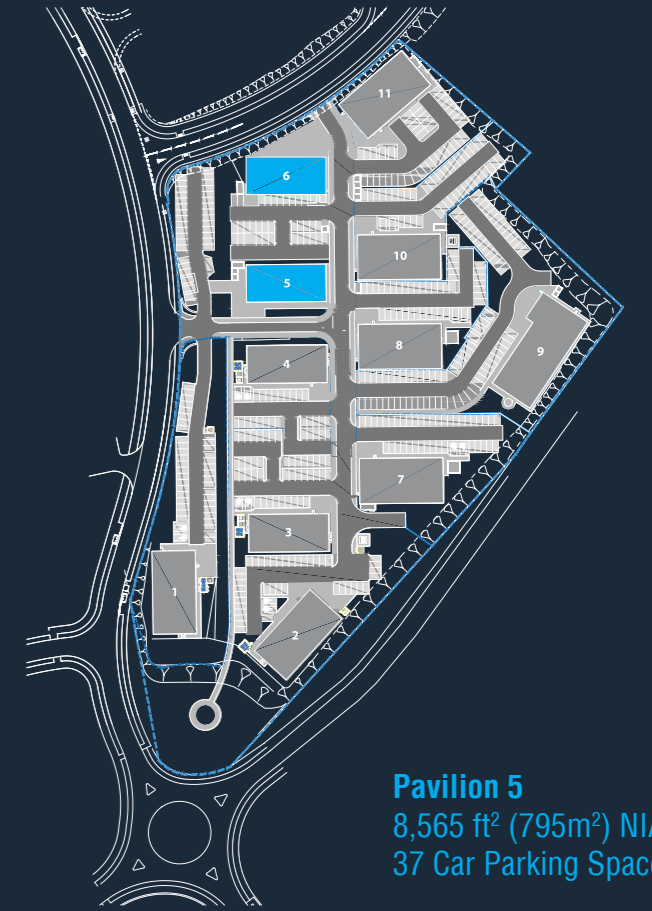
PAVILIONS 5/6 5: 8,565 ft<sup>2</sup> 6: 8,566 ft<sup>2</sup>



First Floor



Ground Floor



**Pavilion 5**  
8,565 ft<sup>2</sup> (795m<sup>2</sup>) NIA  
37 Car Parking Spaces

**Pavilion 6**  
**First Floor**  
Let to StormGeo  
**Ground Floor**  
4,295 ft<sup>2</sup> (399m<sup>2</sup>) NIA  
19 Car Parking Spaces

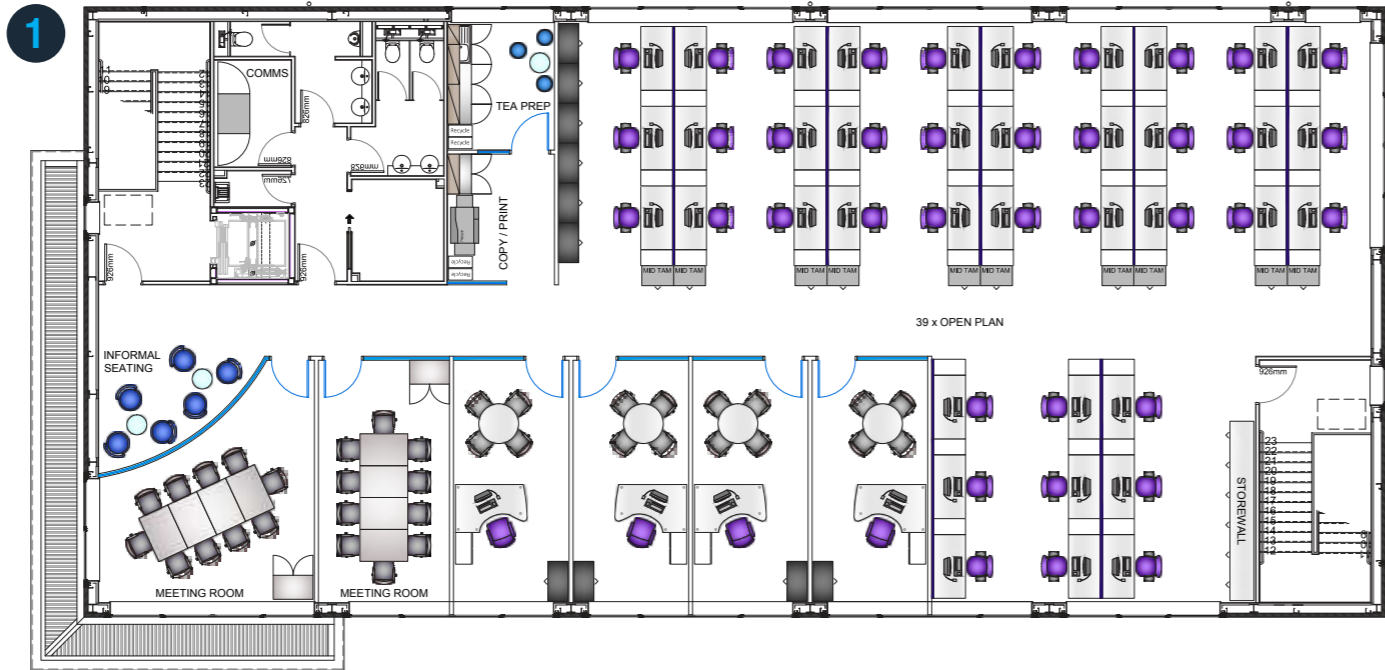
## Pavilions 5/6 Space Plans

### Medium Density

5: 8,565 ft<sup>2</sup> (795m<sup>2</sup>) NIA  
5: 8,566 ft<sup>2</sup> (795m<sup>2</sup>) NIA  
37 Car Parking Spaces

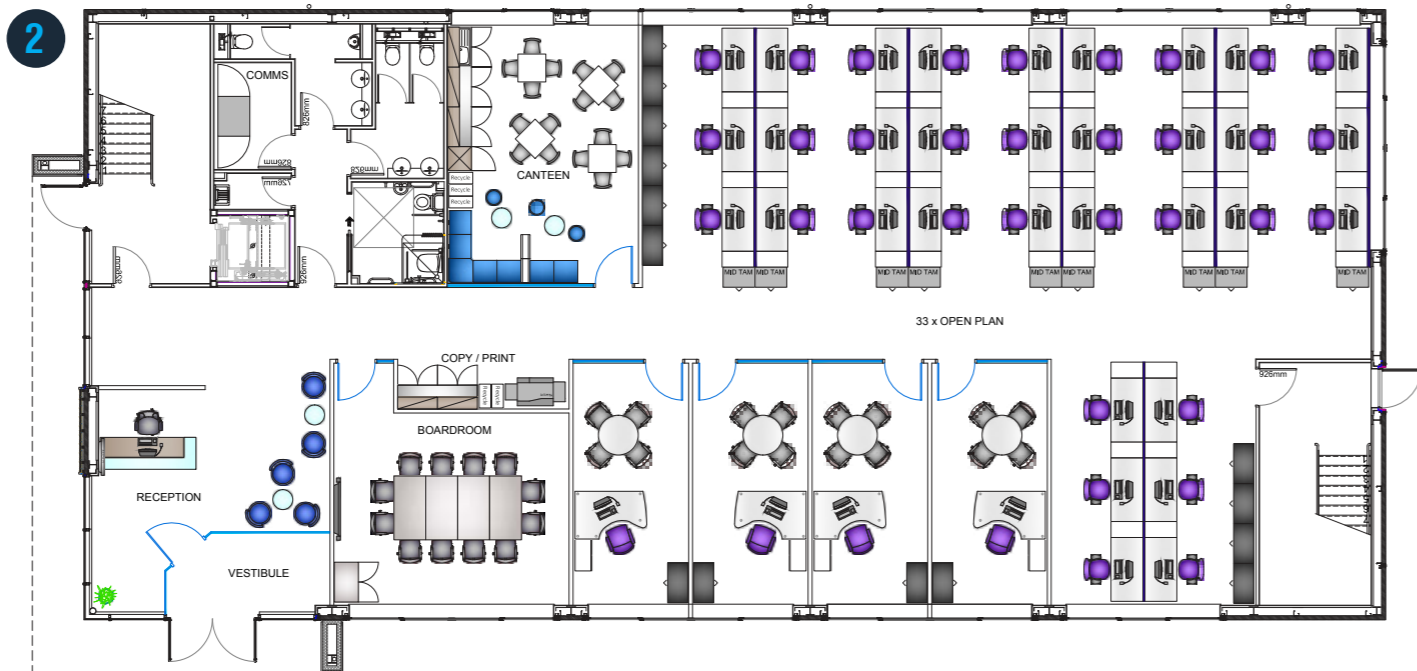
#### 1. First Floor

39 x open plan  
4 x single offices  
2 x 10 person meeting rooms  
Copy/print area  
Tea prep  
Informal seating area



#### 2. Ground Floor

33 x open plan  
4 x single offices  
1 x 12 person boardroom  
Copy/print area  
Canteen  
Reception/waiting area



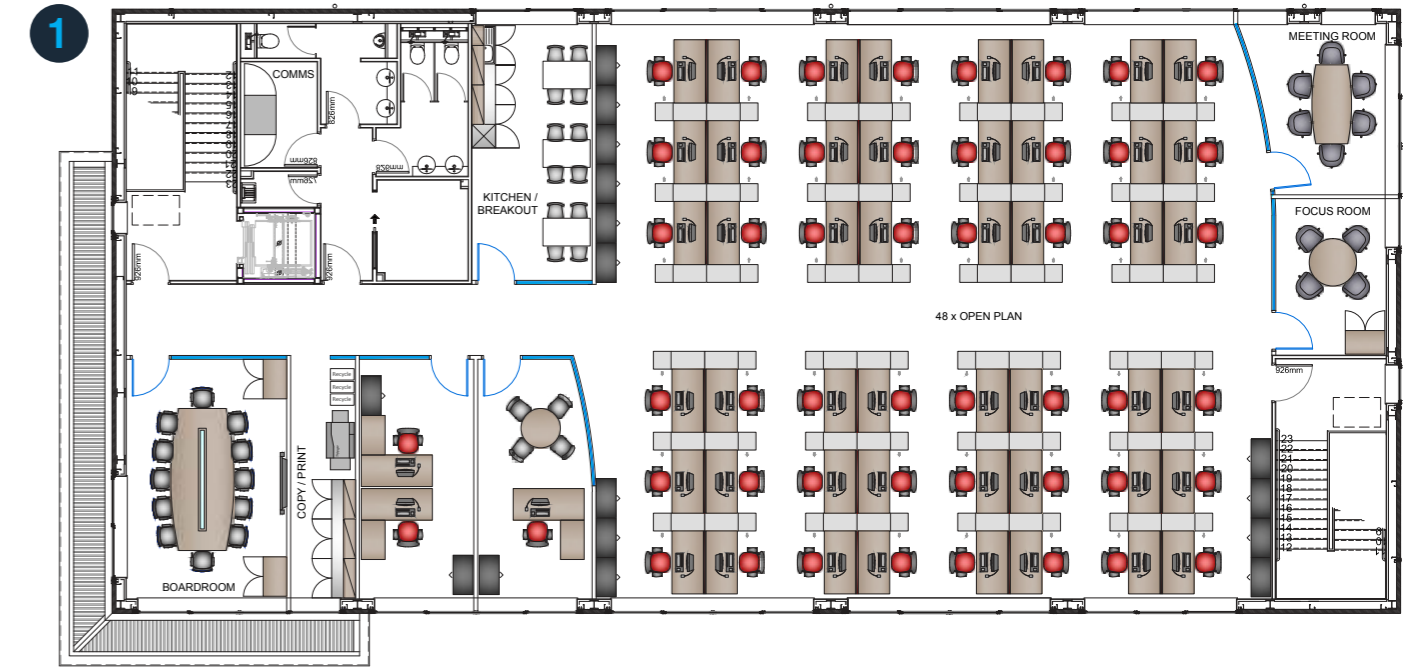
## Pavilions 5/6 Space Plans

### High Density

5: 8,565 ft<sup>2</sup> (795m<sup>2</sup>) NIA  
5: 8,566 ft<sup>2</sup> (795m<sup>2</sup>) NIA  
37 Car Parking Spaces

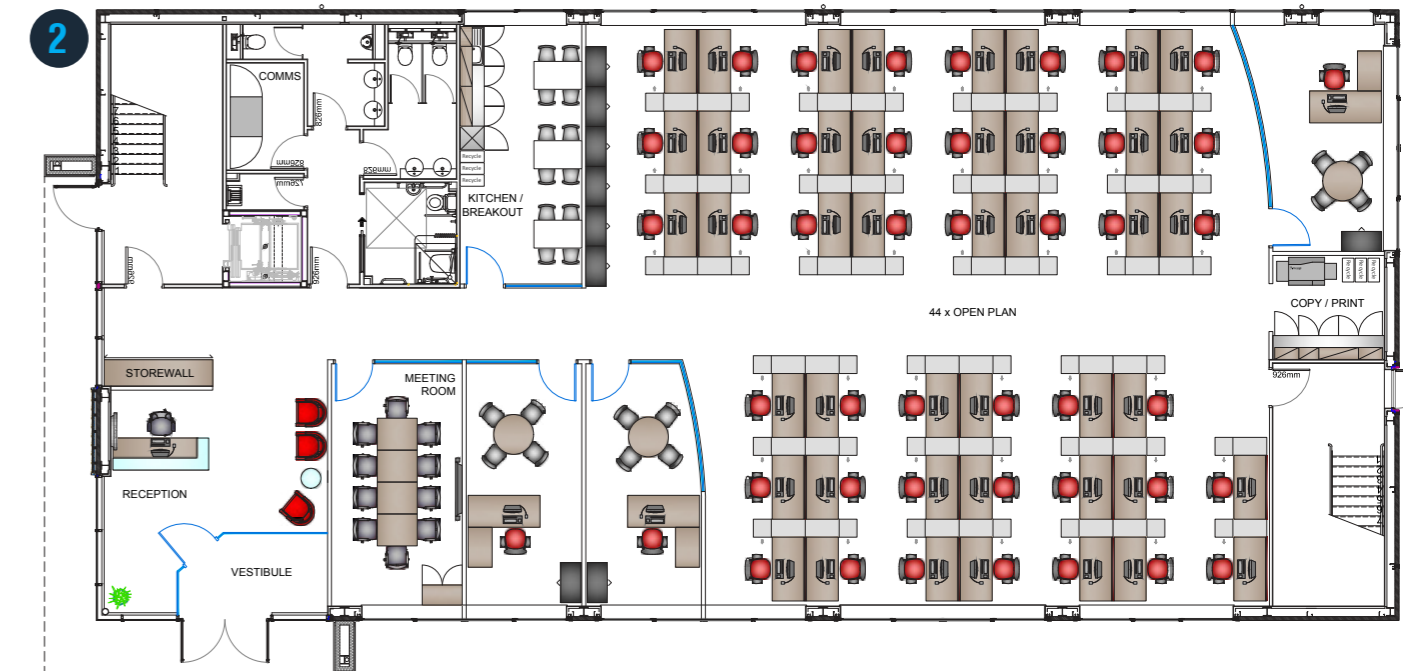
#### 1. First Floor

48 x open plan  
1 x single office  
1 x double office  
1 x 12 person boardroom  
1 x 6 person meeting room  
1 x focus room  
Copy/print area  
Kitchen/breakout area

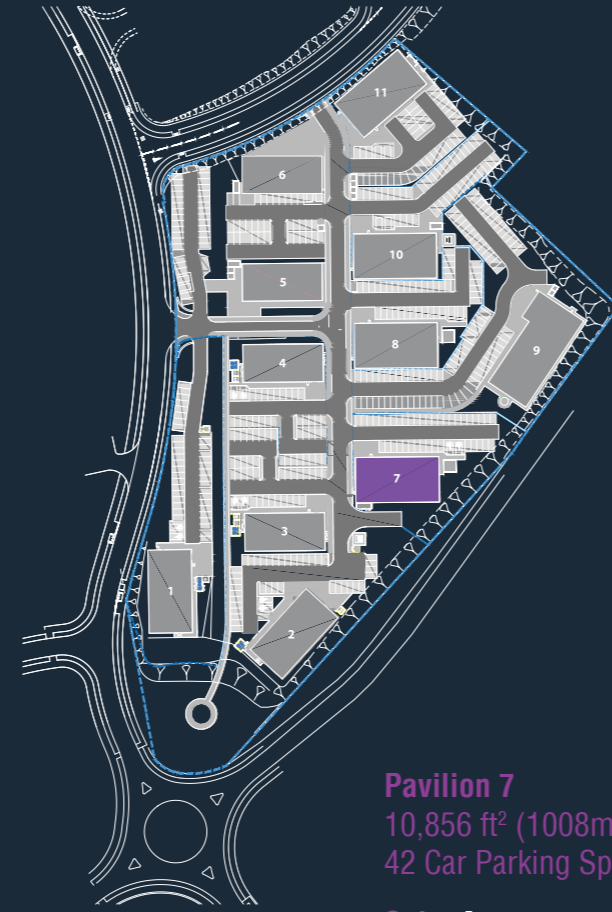
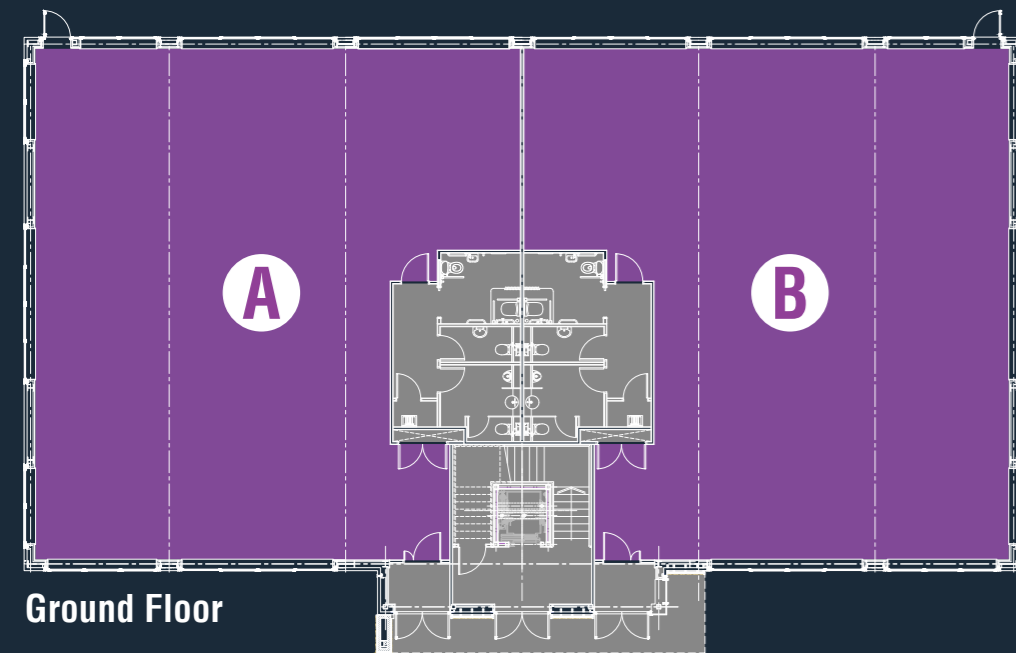
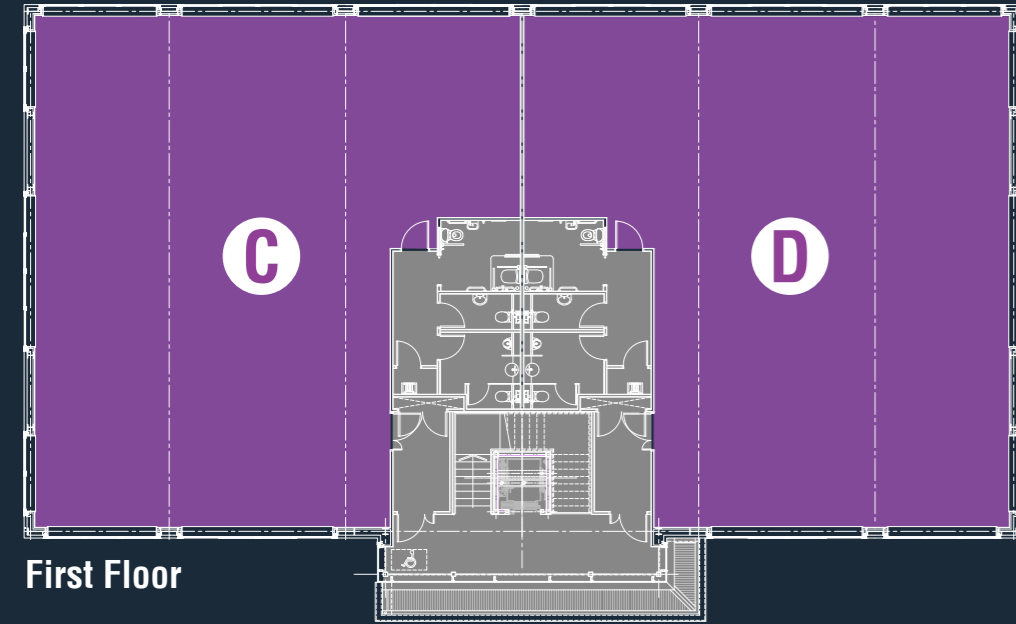


#### 2. Ground Floor

Ground Floor  
44 x open plan  
3 x single offices  
1 x 10 person meeting room  
Copy/print area  
Kitchen/breakout area  
Reception/meeting room



**PAVILION 7** 10,856 ft<sup>2</sup>



**Pavilion 7**  
 10,856 ft<sup>2</sup> (1008m<sup>2</sup>) NIA  
 42 Car Parking Spaces

**Suite A**  
 2693 ft<sup>2</sup>

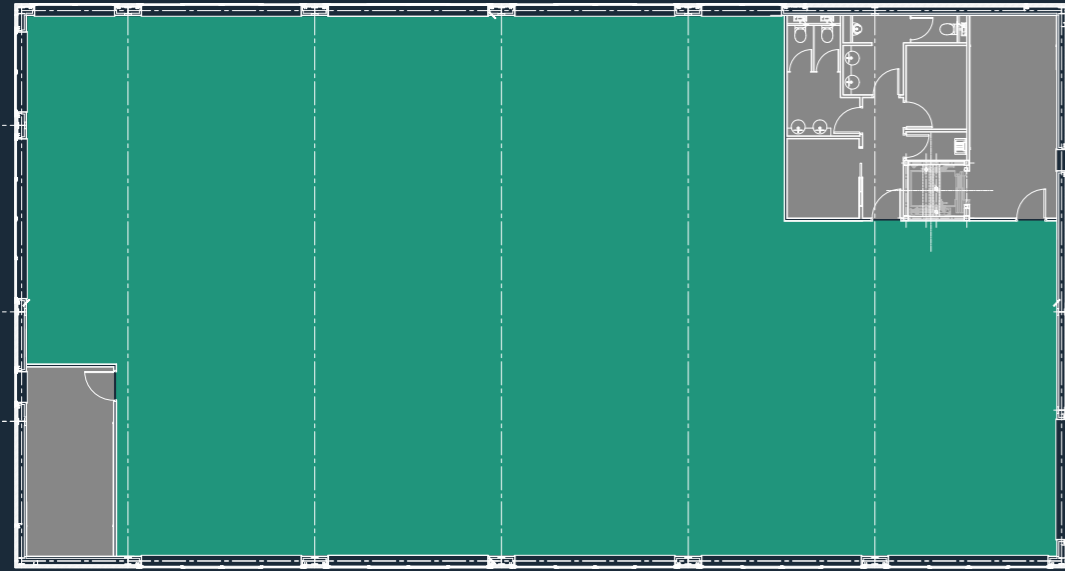
**Suite B**  
 2695 ft<sup>2</sup>

**Suite C**  
 2732 ft<sup>2</sup>

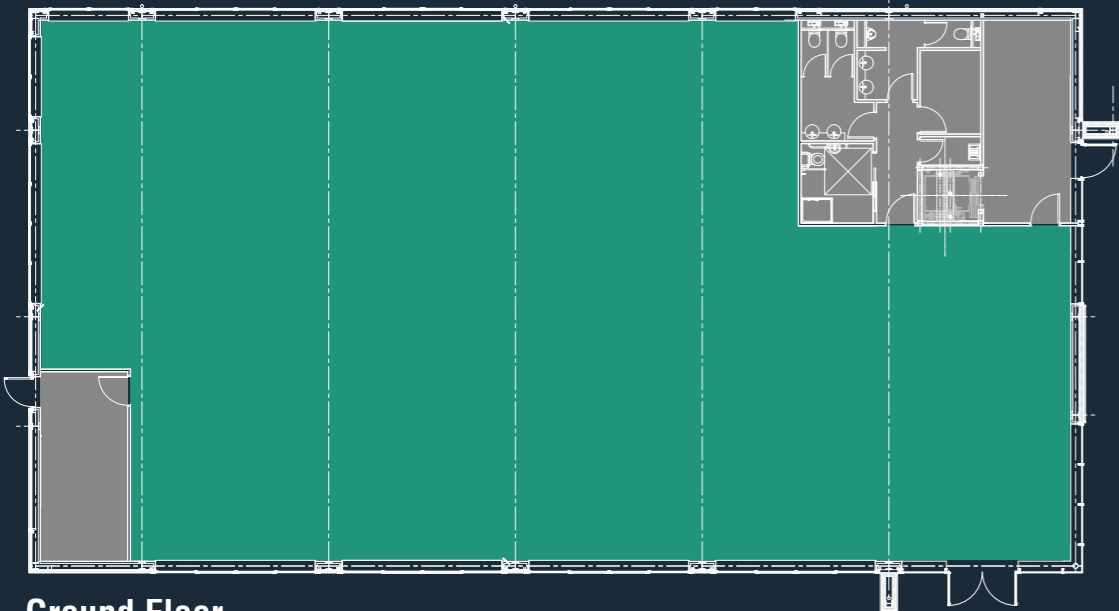
**Suite D**  
 2736 ft<sup>2</sup>



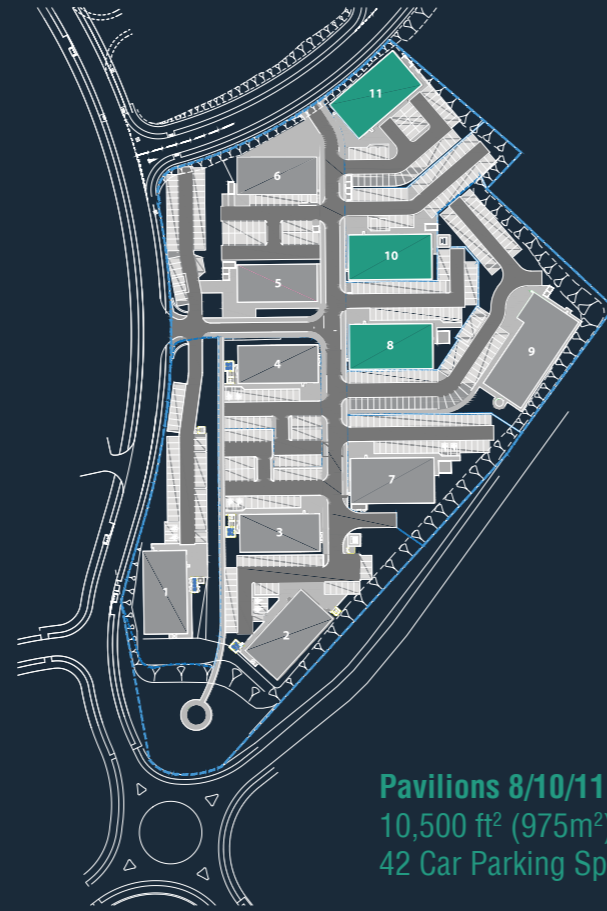
PAVILIONS 8/10/11 10,500 ft<sup>2</sup>



First Floor

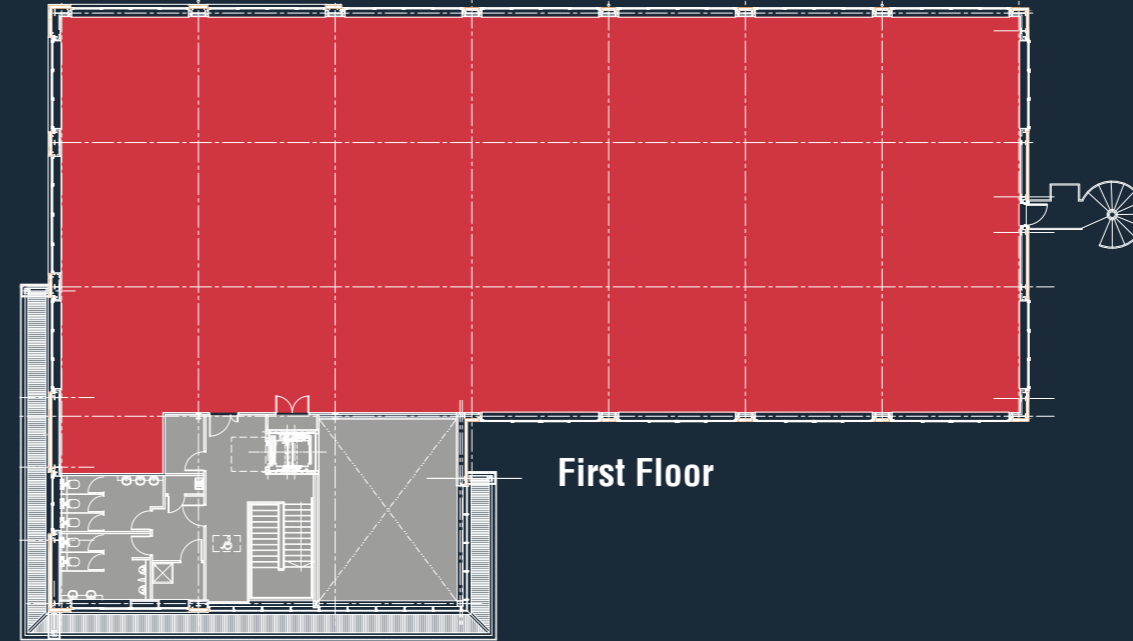


Ground Floor

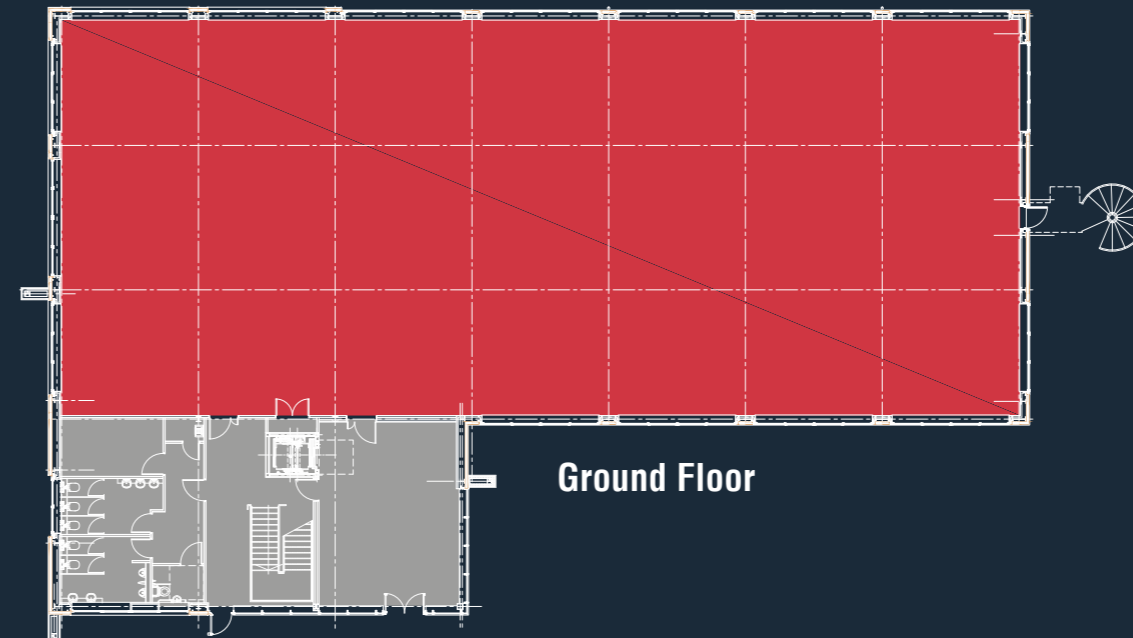


Pavilions 8/10/11  
10,500 ft<sup>2</sup> (975m<sup>2</sup>) NIA  
42 Car Parking Spaces

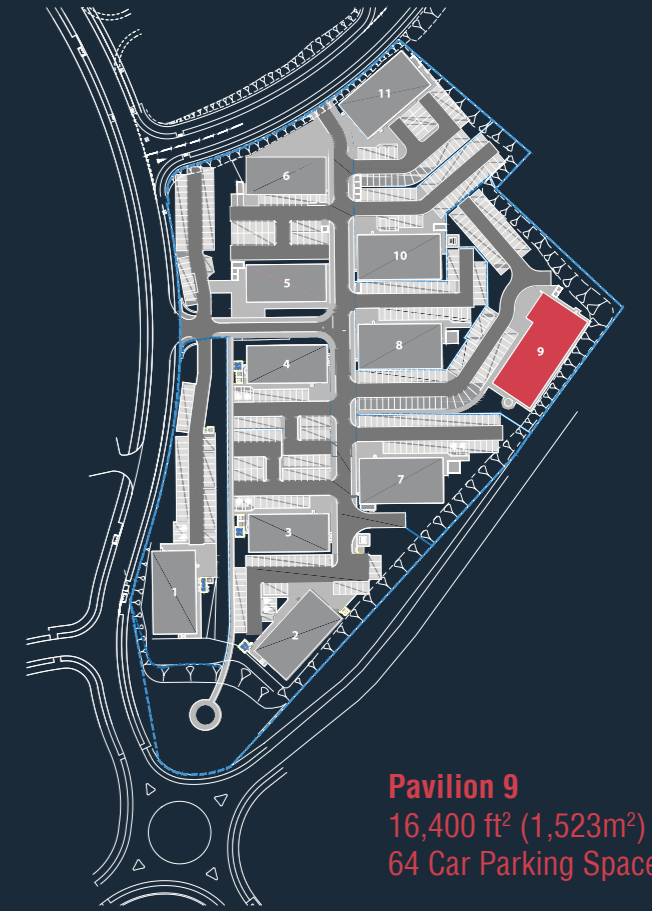
PAVILION 9 16,400 ft<sup>2</sup>



First Floor



Ground Floor



Pavilion 9  
16,400 ft<sup>2</sup> (1,523m<sup>2</sup>)  
64 Car Parking Spaces



# Kingshill P A R K

[www.knightpropertygroup.co.uk](http://www.knightpropertygroup.co.uk)

## LEASE TERMS

The accommodation is available to let on full repairing and insuring terms. Further information is available on request.

## LEGAL COST

The ingoing tenant will be responsible for the landlords' reasonable legal expenses, together with SDLT and registration dues.

## RENTAL

Information and quoting rental is available on application.

## RATING ASSESSMENT

A guide to rating assessment is available on request.

## VAT

All figures quoted are exclusive of VAT.

To discuss how Knight Property Group can accommodate you at Kingshill Business Park, or to discuss the terms in further detail, please contact our letting agent.

**Ryden**.co.uk  
01224 588866

Andrew Smith  
t: 01224 588866  
e: [andrew.smith@ryden.co.uk](mailto:andrew.smith@ryden.co.uk)

**savills**

Dan Smith  
t: 01224 971111  
e: [dan.smith@savills.com](mailto:dan.smith@savills.com)