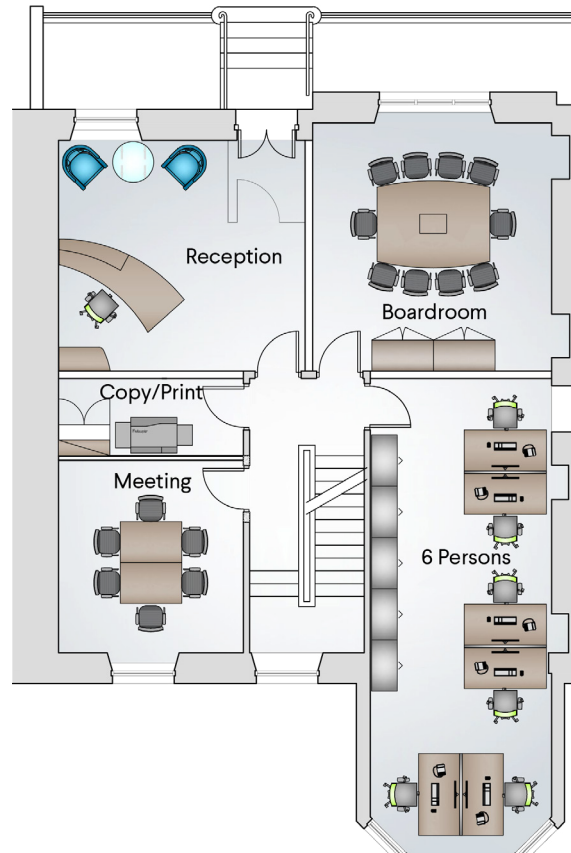
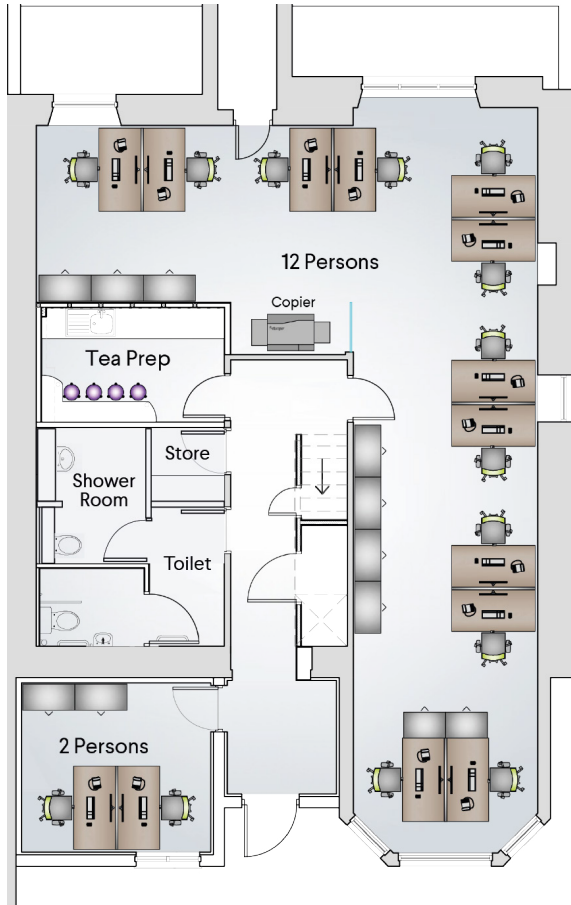


FLOOR PLANS



LOWER GROUND FLOOR

100.42 SQ.M / 1,081 SQ.FT

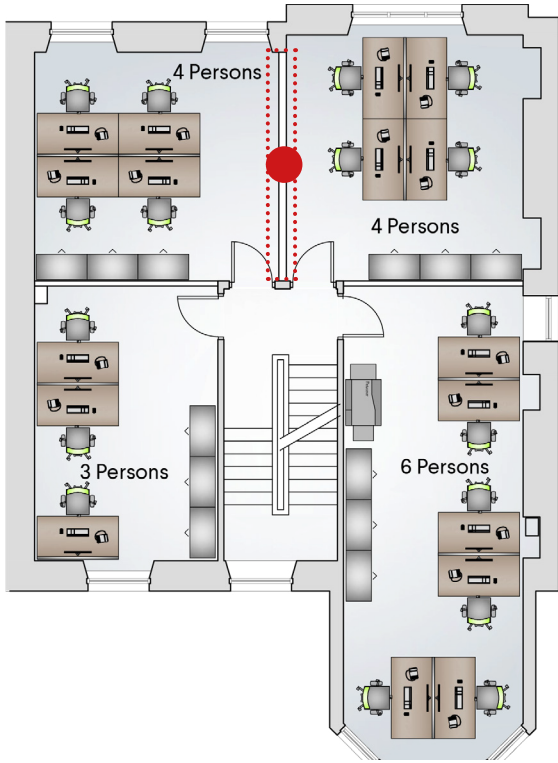
- 1 x 12 Person Office
- 1 x 2 Person Office
- Shower Room
- Tea Prep
- Store

GROUND FLOOR

95.41 SQ.M . 1,027 SQ.FT

- Reception
- Boardroom
- Meeting Room
- 1 x 6 Person Office
- Copy / Print Room



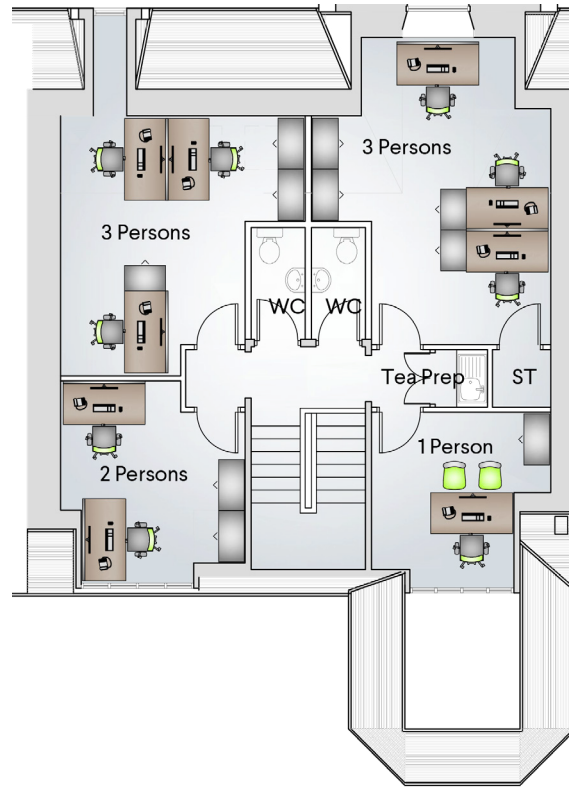


FIRST FLOOR:

98.75 SQ.M / 1,063 SQ.FT

- 2 x 4 Person Offices
- 1 x 6 Person Office
- 1 x 3 Person Office

● There is a building warrant to remove internal wall if required between the two front rooms, creating more seating space.



SECOND FLOOR

65.40 SQ.M . 704 SQ.FT

- 2 x 3 Person Offices
- 1 x 2 Person Office
- 1 x Single Office
- Tea Prep

