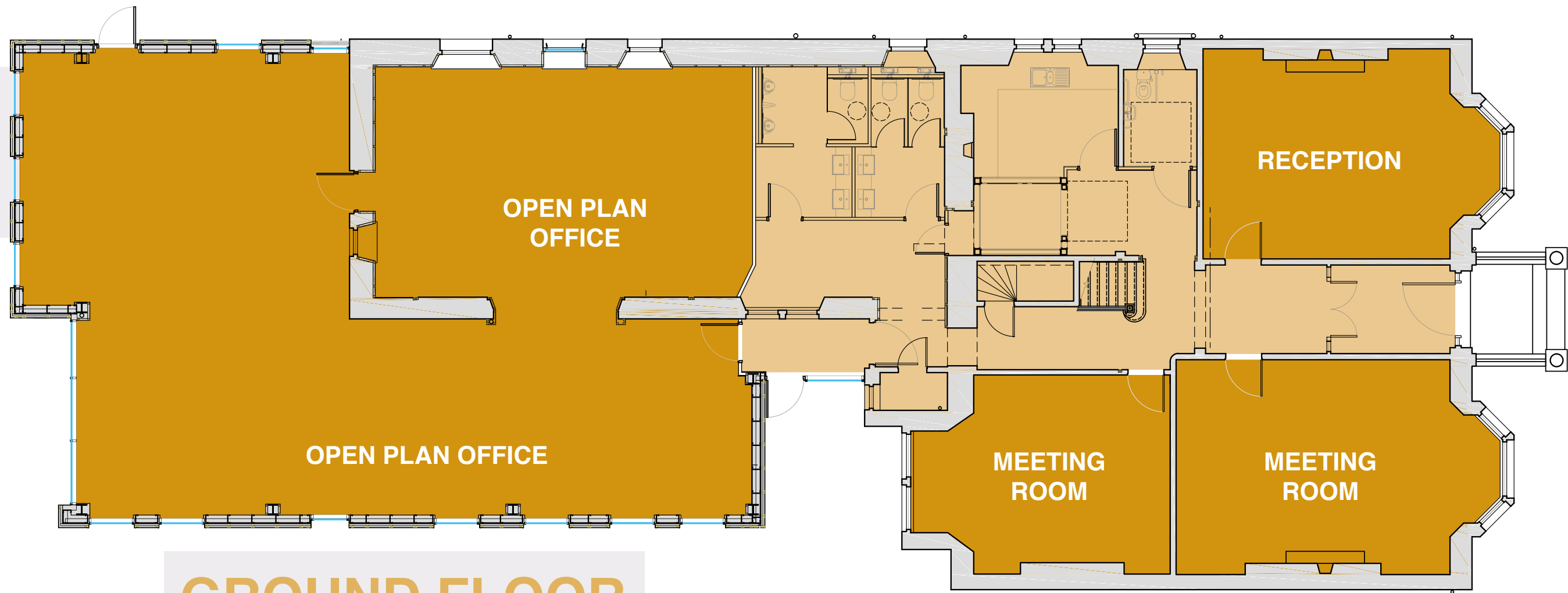


FLOOR PLAN

301.4 m²
(3,244 ft²)

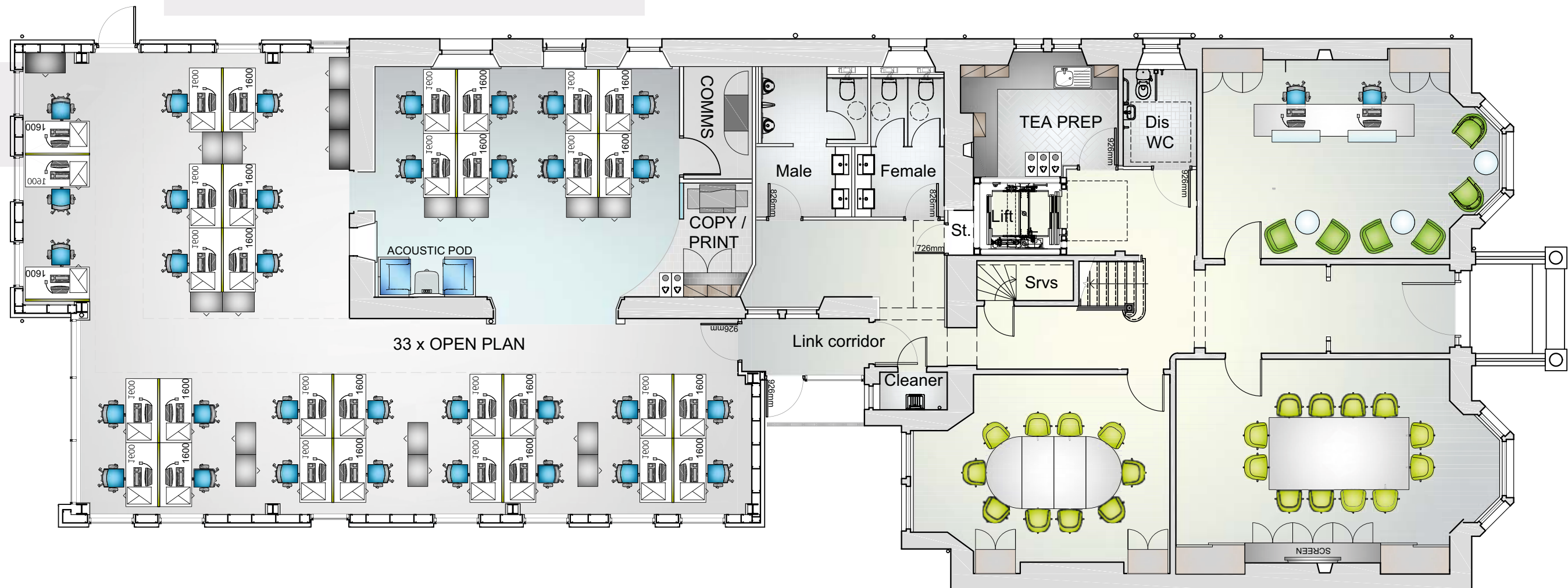


GROUND FLOOR

SPACE PLAN

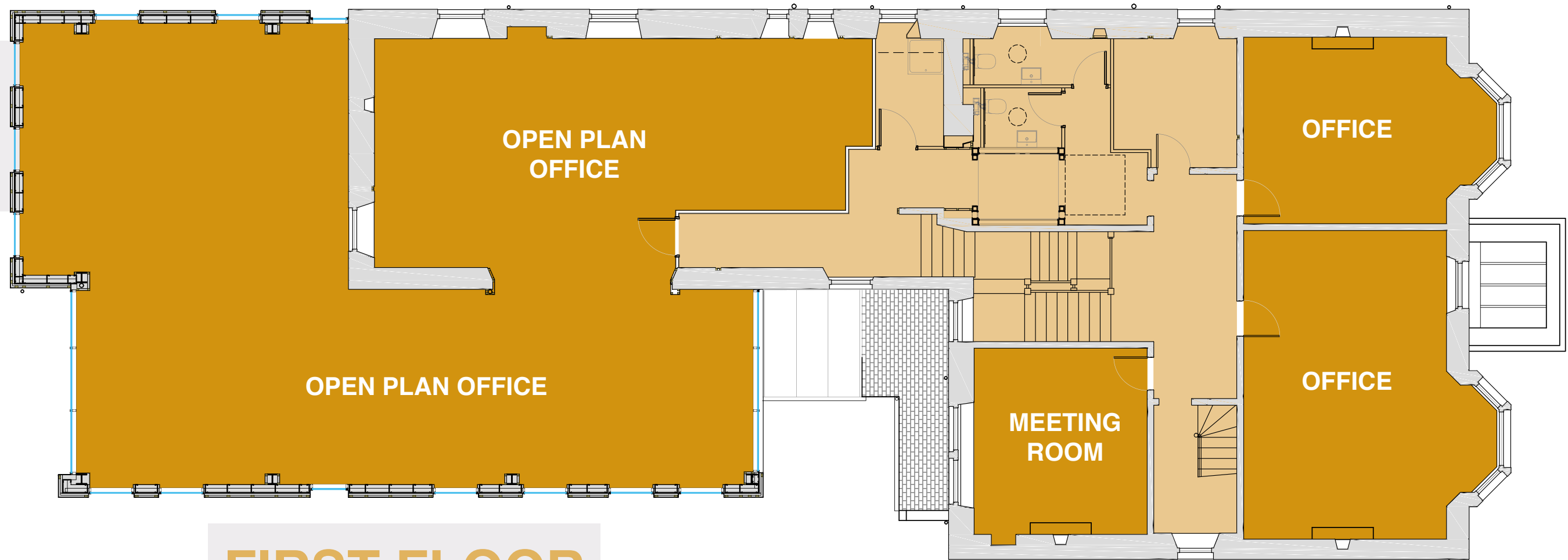
PROPOSED GROUND FLOOR LAYOUT

- 33 x open plan
- 1 x 10 person meeting room
- 1 x 12 person boardroom
- 1 x copy/print
- 1 x tea prep
- 1 x comms room
- 1 no x reception & waiting area



FLOOR PLAN

300 m²
(3,229 ft²)

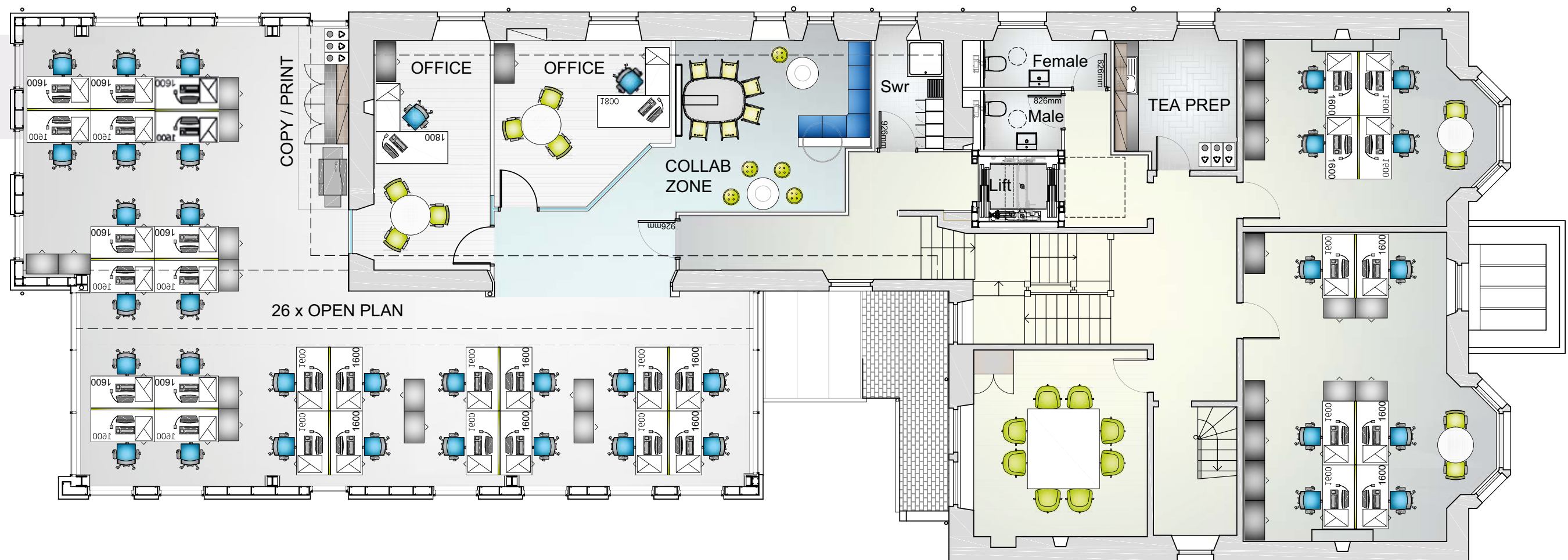


FIRST FLOOR

SPACE PLAN

PROPOSED FIRST FLOOR SPACE PLAN

- 2 x single offices
- 26 x open plan
- 1 x Collaboration
- 1 x 4 person office
- 1 no x 6 person office
- 1 x 8 person meeting room
- 1 x copy/print
- 1 no x tea prep



PROPOSED ATTIC ROOM

- Project room
- Combed Storgae

45.49 m²
(489 ft²)

